

OFFICE OF INTERNATIONAL AFFAIRS



# Delhi Technological University

Formerly Delhi College of Engineering

ISO 9001:2015 Certified

Academic Year 2025-26

Admission Brochure for  
International Students

Accredited with 'A+' Grade (CGPA 3.47 out of 4.0) by NAAC

## Delhi Technological University

Established by Govt. of NCT of Delhi vide 6 of 2009



[www.dtu.ac.in](http://www.dtu.ac.in)



[oia.dtu@dtu.ac.in](mailto:oia.dtu@dtu.ac.in)







# TABLE OF CONTENTS

Particulars	Page. No.
1 Tentative Admission Schedule	04
2 Message from Vice-Chancellor	05
3 Message from Dean (OIA)	06
4 Organization Chart (OIA)	07
5 About DTU	08-27
– Vision	09
– Mission	09
– Core Values	09
– Programmes offered by DTU	10-21
– Rankings, Accreditations, and Awards	22
– Faculty @ DTU	22
– Infrastructure @ DTU	24
– Hostel and Accommodation	25
– Beyond Academics at DTU	25
– DTU Innovation & Incubation foundation (DTU IIF)	25
– Centres of Excellence	27
6 DCE DTU alumni Network & Notable Alumni	28
7 About Office of International Affairs (OIA)	29
– Vision / Mission	29
– Glimpses of Visits by International Universities	30
– International Collaborations	31
8 Admission Process: Eligibility and Admission Process	32
9 Mode of Admission	35
10 Admission Procedure	37-38
11 Seat Martix	39
12 Fee Structure	40
13 Code of Conduct for International Students	41
14 Certificates and Formats	42
15 Contact Us	48

# TENTATIVE ADMISSION SCHEDULE WITH IMPORTANT DATES\*

(For the Final Schedule, visit DTU website: [www.dtu.ac.in](http://www.dtu.ac.in))

## TENTATIVE SCHEDULE OF ADMISSION

FOR ALL UG, PG & PHD PROGRAMMES VIA MODE M3 (I.E. DIRECT DTU PORTAL)

Start Date of filling Online Application form	08.05.2025
Last Date of submitting Online Application form	30.06.2025
Declaration of list of eligible/ non eligible candidates	09.07.2025
Uploading 1" (First) list of provisionally selected students	15.07.2025
Acceptance of provisional admission offer and submission of fees	21.07.2025
Display of vacant seats if available on website and simultaneously announcement of 2nd round of opening of registration form.	25.07.2025
Date of Physical Reporting at DTU	July 31, 2025 & August 01, 2025

Disclaimer: This brochure contains information about admission process, tuition fees, Programmes, campus life of the Delhi Technological University applicable at the time of printing. Amendments of the information in this brochure may be updated from time to time without prior notification. The truthfulness of the information contained in this brochure is therefore not guaranteed by the University at any given time and is always subject to verification. The user is kindly requested to verify the correctness of the published information with the University at all times. Failure to do so will not give rise to any claim or action of any nature against the University by any party whatsoever.



**Prof. Prateek Sharma**  
Vice-Chancellor



## MESSAGE FROM HON'BLE VICE CHANCELLOR

Delhi Technological University, formerly known as Delhi College of Engineering, stands tall as a premier institution with a distinguished legacy of over eight decades. Globally recognized for its academic rigour, innovation-driven research, and student-centric approach, DTU continues to nurture minds that go on to make meaningful contributions to society and the industry alike.

From our undergraduate programmes to doctoral programmes offered by DTU, we instil a spirit of inquiry, creativity, and leadership in our students. Our accomplished faculty, cutting-edge facilities, and dynamic learning environment provide a strong foundation for holistic development of the students. The success of our alumni across the globe is a reflection of the values and excellence fostered here at DTU.

Our vision of internationalization extends beyond collaborations and numbers. At DTU, we are deeply committed to creating globally benchmarked academic programmes, vibrant research ecosystems, and a culturally enriching campus environment. We actively engage in international partnerships and student exchanges, facilitating the cross-cultural understanding of ideas and perspectives that are vital in today's interconnected world. Beyond academics, DTU offers a vibrant campus life incorporating various student societies, cultural festivals, innovation hubs, and a strong support network tailored for international students.

It gives me great pleasure to know that you are considering Delhi Technological University for your academic journey. In doing so, you are not merely pursuing a degree; you are embracing an opportunity to join a vibrant, inclusive community that is actively shaping the future through innovation, collaboration, and excellence. The Office of International Affairs is dedicated to supporting you through every step of your academic journey, ensuring that your experience is both enriching and empowering.

I warmly welcome all aspiring international students to Delhi Technological University. Your presence will further enhance our global community and strengthen our shared commitment to knowledge, innovation, and cultural understanding.

**Prof. Prateek Sharma**  
Vice Chancellor



## MESSAGE FROM DEAN (INTERNATIONAL AFFAIRS)

It is both a privilege and an honor to welcome all our international friends to DTU. We firmly believe that their stay in India will be a transformative experience, richly imbued with Indian culture and heritage. The Office of International Affairs at DTU is a dynamic division, embracing diversity, integrity, and a multitude of cultures, religions, and races. We subscribe to the philosophy of "Vasudhaiva Kutumbakam," meaning "The World Is One Family."

Delhi Technological University (DTU) has emerged as a premier educational destination for foreign nationals worldwide. In close collaboration with the Ministry of External Affairs, Ministry of Education, Ministry of Home Affairs, and investigative departments, we are committed to providing the finest education and training to our international students. They also engage in various extracurricular activities for their all-around development.

Currently, the university hosts over 500 international students from 64 countries, including our neighbors. We strictly follow the policies and guidelines set by the government. DTU seeks active partnerships with leading global universities for research, training, and exchange programmes. The Office of International Affairs offers a comprehensive service, from application to degree completion, for all international students.

In conclusion, we are once again ready to welcome all our international students to one of India's premier institutions, Delhi Technological University.

Prof. Pravir Kumar

# ORGANIZATION CHART (OIA)

HONB'BLE VICE CHANCELLOR



DEAN  
(INTERNATIONAL AFFAIRS)



ASSOCIATE DEAN  
(INTERNATIONAL AFFAIRS)



COORDINATORS



ASSISTANT REGISTRAR



SECTION OFFICER



OFFICE STAFFS



**Prof. Prateek Sharma**  
Honb'ble Vice Chancellor



**Prof. Pravir Kumar**  
Dean (International Affairs)



**Dr Archana Singh**  
Associate Dean

---

## FACULTY COORDINATORS

Dr Richa, Dr Rohit, Dr Venkata,  
Dr Rituraj, Mr Kuldeep, Mr  
Saurabh, Ms. Sumedha

---

## ASSISTANT REGISTRAR

**Dr Vivek Tripathi**

# ABOUT DELHI TECHNOLOGICAL UNIVERSITY

Delhi Technological University has been a beacon of academic excellence and innovation for the past 83 years. The university has garnered recognition for being an eminent institution, known for its academic research and entrepreneurial excellence in a plethora of fields. Delhi Technological University has adopted the principles of knowledge, critical thinking, creativity and innovation at the core of its education policy, all while embracing integration, access and inclusivity. With an aim to provide a holistic education, conventional classroom teaching has been merged with innovative methods fostering curiosity and academic prowess in our students. From its inception as Delhi Polytechnic to its present-day identity as Delhi Technological University, the university has always championed the cause of providing students with a high-quality education that allows them to flourish in their chosen domains. Along with imparting knowledge, the University has achieved pioneering advances in undertaking creative and internationally relevant research and innovation over the years.

With 83 years of its long-established tradition of excellence in engineering & technology education, research and innovations, Delhi College of Engineering, (initially established with the name – Delhi Polytechnic) came into existence in the year

1941 to cater the needs of Indian industries for trained technical manpower with practical experience and sound theoretical knowledge. The institution was set up at historic Kashmere Gate campus as a follow up of the Wood and Abott Committee of 1938. It comprised of a multi-disciplinary and multi-level institution offering wide ranging programmes in engineering, technology, arts and sculpture, architecture, pharmacy and commerce. In 1952 the college was affiliated with University of Delhi and started formal Degree level Programmes. The department of Architecture later became the School of Planning and Architecture (SPA), now a Deemed University and Institution of National importance. The department of Arts and Sculpture became College of Arts and the departments of Chemical Technology and Textile Technology were shifted out en-block to mark beginning of the IIT Delhi at its new campus at Hauz Khas. Further expanding its academic reach, the Department of Pharmacy, evolved into the College of Pharmacy under the Directorate of Training and Technical Education, Delhi. The department of commerce was later abolished and the faculty of management studies of the University of Delhi was established. Delhi College of Engineering is thus the mother institution of a number of national projects including IITD, SPA, College of Arts and even the famous FMS.





After the reconstitution of the Delhi College of Engineering by the Government of NCT of Delhi in 2009, by Act 6 of 2009, passed by the assembly of the NCT of Delhi, DCE became Delhi Technological University. It is a non-affiliating, teaching and research University, committed to achieve excellence in Engineering, Science, Technology, Management and allied areas. Over its rich history of over 83 years, the institution has been serving the nation and the global community since its inception in 1941, by providing trained manpower of highest quality in the field of engineering and technology, and is globally well known for its outstanding education, research and innovations.

DTU remains committed to cultivating a culture where scientific research fuels technological advancement and technological ingenuity enriches scientific exploration so that science and engineering seamlessly converge. The University is dedicated to nurturing innovation by promoting industrially relevant projects, technology incubation, and research-driven education with the help of a dedicated Incubation and Innovation Foundation. With a strategic focus on cutting-edge research and development, DTU continues to expand its footprint in pioneering innovations, interdisciplinary collaboration, and entrepreneurial ventures.

Upholding and uplifting its long and remarkable history in education and research, the University currently offers various inter-disciplinary and industry relevant

programs in Science, Engineering, Management & Allied areas at the undergraduate, postgraduate and doctoral level. The University has established a strong academia-industry interface and has collaborations with reputed research organizations, industries, and premier institutions. Many alumni of the institute have achieved remarkable success both in India and abroad, bringing honour to the name of the University. Their contributions reflect the strong foundation and values instilled during their time at the University. DTU places great emphasis on nurturing national character, self-confidence, and leadership among its students and fosters an ecosystem that encourages creativity, imagination, and innovation. The University is committed to developing not only skilled professionals but also responsible, forward-thinking leaders. With its rich legacy and progressive outlook, DTU continues to empower students to make a lasting impact and stay at the forefront of global academic excellence.

## Location

Delhi Technological University is situated at Shahbad Daulatpur, Rohini in North - West Delhi, India. It is approximately 32 kilometers from the Indira Gandhi International Airport, New Delhi and the nearest Metro stations are Samaypur Badli/Rithala. Once at Samaypur Badli/Rithala, board local transport, auto or bus to get down at DTU, which is 3-4 kms far from Samaypur Badli/ Rithala Metro Station.



## VISION

“To be a world-class university through education, innovation, and research for the service of humanity”

To establish centres of excellence in emerging areas of science, engineering, technology, management, and allied areas.

To foster an ecosystem for incubation, product development, transfer of technology, and entrepreneurship.

To create environment of collaboration, experimentation, imagination, and creativity.

To develop human potential with analytical abilities, ethics, and integrity.

To provide environment friendly, reasonable and sustainable solutions for local and global needs.



## MISSION

## CORE VALUES



Integrity



Compassion



Commitment



Creativity



Collaboration



Inclusion

## ACADEMIC PROGRAMMES AT DELHI TECHNOLOGICAL UNIVERSITY

The University offers 14 Undergraduate engineering programmes (B.Tech.) and three bachelor programmes [i.e. B.Des., BBA, BA (Hons.) Economics], 04 programmes under Continuing education, 25 M.Tech. programmes, 5 MBA programmes, 04 M.Sc. programmes, 04 Integrated B.Sc & M.Sc. programmes, MA (Economics), B.Des and M.Des. Programme. The university offers Ph. D programmes in all areas of engineering, science, management, design and economics. The UG and PG programmes of DTU offer the most modern curricula, based on the Choice Based Credit System (CBCS) and as per guidelines of NEP 2020 having rich mix of courses

from science, engineering, management, social sciences, humanities, fine arts, liberal arts, classical music, sports, etc. The course curricula have been developed with a view to integrate advancements in science and engineering, while also incorporating industry relevant technologies. To provide further flexibility there is provision for credit transfer and earning credits through massive online courses (MOOCs) from different platforms such as NPTEL, SWAYAM, Coursera and Edx etc. The curriculum is regularly updated keeping in view the new technologies and changes in the needs of industries and society.

### Undergraduate Programmes

S. No.	Programme	Department
1	B. Tech (Chemical Engineering)	Applied Chemistry
2	B. Tech (Mathematics and Computing)	Applied Mathematics
3	B. Tech (Engineering Physics)	Applied Physics
4	B. Tech (Biotechnology)	Biotechnology
5	B. Tech (Civil Engineering)	Civil Engineering
6	B. Tech (Computer Science & Engineering)	Computer Science and Engineering
7	B. Tech (Electronics and Communication Engineering)	Electronics and Communication Engineering
8	B. Tech (Electrical Engineering)	Electrical Engineering
9	B. Tech (Environmental Engineering)	Environmental Engineering
10	B. Tech (Information Technology)	Information Technology
11	B. Tech (Mechanical Engineering)	Mechanical Engineering
12	B. Tech (Production and Industrial Engineering)	Mechanical Engineering
13	B. Tech (Mechanical Engineering with Specialization in Automotive Engineering)	Mechanical Engineering
14	B. Tech (Software Engineering)	Software Engineering

15	Bachelor of Business Administration	USME
16	Bachelor of Arts (Honors) Economics	University School of Management and Entrepreneurship
17	Bachelor of Business Administration (Innovation, Entrepreneurship and Venture Development)	University School of Management and Entrepreneurship
18	B. Tech (Civil Engineering) - Continuing Education	Civil Engineering
19	B. Tech (Electronics and Communication Engineering) - Continuing Education	Electronics and Communication Engineering
20	B. Tech (Mechanical Engineering) - Continuing Education	Mechanical Engineering
21	B. Tech (Electrical Engineering) - Continuing Education	Electrical Engineering
22	Bachelor of Design	Department of Design

### Postgraduate Programmes

S. No.	Programme	Department
1	M.Tech (Polymer Technology)	Applied Chemistry
2	M.Tech (Material Science & Technology)	Applied Physics



3	M.Tech (Bioinformatics)	Biotechnology
4	M.Tech (Industrial Biotechnology)	Biotechnology
5	M.Tech (Geotechnical Engineering)	Civil Engineering
6	M.Tech (Hydraulics & Water Resources Engineering)	Civil Engineering
7	M.Tech (Structural Engineering)	Civil Engineering
8	M.Tech (Computer Science & Engineering)	Computer Science & Engineering
9	M.Tech (Artificial Intelligence)	Computer Science & Engineering
10	M.Tech (Information Technology)	Information Technology
11	M.Tech (Microwave and Optical Communication)	Electronics and Communication Mechanical Engineering
12	M.Tech (Signal Processing & Digital Design)	Electronics and Communication Engineering
13	M.Tech (VLSI Design and Embedded System)	Electronics and Communication Engineering
14	M.Tech (Control & Instrumentation)	Electrical Engineering
15	M.Tech (Power Systems)	Electrical Engineering
16	M.Tech (Power Electronics and Systems)	Electrical Engineering
17	M.Tech (Environmental Engineering)	Environmental Engineering
18	M.Tech (Industrial Engineering and Management)	Mechanical Engineering
19	M.Tech (Energy Systems and Management)	Mechanical Engineering
20	M.Tech (Computer Aided Analysis and Design)	Mechanical Engineering
21	M.Tech (Production Engineering)	Mechanical Engineering
22	M.Tech (Thermal Engineering)	Mechanical Engineering
23	M.Tech (Software Engineering)	Software Engineering
24	M.Tech (Data Science)	Software Engineering

25	M.Tech (Geoinformatics)	Multi-Disciplinary Centre for Geo-Informatics
----	-------------------------	---

## M. Tech by Research

S. No.	Programme	Department
1	M.Tech by Research	Applied Chemistry
2	M.Tech by Research	Applied Physics
3	M.Tech by Research	Biotechnology
4	M.Tech by Research	Civil Engineering
5	M.Tech by Research	Computer Science & Engineering
6	M.Tech by Research	Information Technology
7	M.Tech by Research	Electronics and Communication Engineering
8	M.Tech by Research	Electrical Engineering
9	M.Tech by Research	Mechanical Engineering
10	M.Tech by Research	Software Engineering
11	M.Tech by Research	Multi-disciplinary Centre for Geo informatics

## MBA Programmes

S. No.	Programme	Department
1	Master of Business Administration	Delhi School of Management
2	MBA in Business Analytics	Delhi School of Management
3	MBA in Innovation, Entrepreneurship and Venture Development	Delhi School of Management
4	Master of Business Administration (Executive)	Delhi School of Management

## M.Sc. Programmes

S. No.	Programme	Department
1	M.Sc. (Mathematics)	Applied Mathematics
2	M.Sc. (Physics)	Applied Physics
3	M.Sc. (Biotechnology)	Biotechnology
4	M.Sc. (Chemistry)	Applied Chemistry

5	M. Sc. (Geospatial Science)	Multidisciplinary Centre for Geoinformatics
---	-----------------------------	---

## 5-Year Integrated B.Sc.-M.Sc. Programmes

S. No.	Programme	Department
1	Integrated B.Sc.-M.Sc. (Mathematics)	Applied Mathematics
2	Integrated B.Sc.-M.Sc. (Physics)	Applied Physics
3	Integrated B.Sc.-M.Sc. (Biotechnology)	Biotechnology
4	Integrated B.Sc.-M.Sc. (Chemistry)	Applied Chemistry
5.	Integrated B.Sc.-M.Sc. (Economics)	Humanities

## M.A. Economics

S. No.	Programme	Department
1	M.A. (Economics)	University School of Management and Entrepreneurship

## Master of Designs

S. No.	Programme	Department
1	M. Des (Interaction Design)	Department of Design
2	M. Des (Product Design)	Department of Design
3	M. Des (Visual Communication)	Department of Design

## Ph.D. Programmes

S. No.	Programme	Department
1	Ph.D. (Chemistry)	Applied Chemistry
2	Ph.D. (Chemical Engineering)	Applied Chemistry
3	Ph.D. (Physics)	Applied Physics
4	Ph.D. (Engineering Physics)	Applied Physics
5	Ph.D. (Mathematics)	Applied Mathematics
6	Ph.D. (Mathematics and Computing)	Applied Mathematics

7	Ph.D. (Biotechnology)	Biotechnology
8	Ph.D. (Civil Engineering Geoinformatics)	Civil Engineering
9	Ph.D. (Computer Science & Engineering)	Computer Science & Engineering
10	Ph.D. (Electronics and Communication Engineering)	Electronics & Communication Engineering
11	Ph.D. (Centre for Excellence for Electric Vehicles and Related Technologies)	Electrical Engineering
12	Ph.D. (Environmental Engineering)	Environment Engineering
13	Ph.D. (Mechanical Engineering)	Mechanical Engineering
14	Ph.D. (Management)	Delhi School of Management
15	Ph.D. (Information Technology)	Information Technology
16	Ph.D. (Software Engineering)	Software Engineering
17	Ph.D. (Computer Science)	Software Engineering
18	Ph.D. (English)	Humanities
19	Ph.D. (Economics)	Humanities
20	Ph.D. (Design)	Department of Design
21	Ph.D. (Management)	University School of Management and Entrepreneurship
22	Ph.D. (Economics)	University School of Management and Entrepreneurship
23	Ph.D. (Innovation, Entrepreneurship & Venture Development)	University School of Management and Entrepreneurship
24	Ph.D. (Centre of Excellence for the Science of Happiness)	Centre of Excellence for the Science of Happiness
25	Ph.D. (Multidisciplinary Centre for Geoinformatics)	Multidisciplinary Centre for Geoinformatics
26	Ph.D. (Vinod Dham Centre of Excellence for Semiconductors and Microelectronics)	Vinod Dham Centre of Excellence for Semiconductors and Microelectronics
27	Ph.D. (Centre of Excellence for Electric Vehicles and Related Technologies)	Centre of Excellence for Electric Vehicles and Related Technologies



28	Ph.D. (Nodal Centre of Excellence in Energy Transition)	Nodal Centre of Excellence in Energy Transition
----	---	---

## DEPARTMENT WISE MINOR SUBJECTS

S. No.	Programme	Department
1	Applied Chemistry	<ul style="list-style-type: none"> <li>• Polymer Technology</li> <li>• Petrochemical Engineering</li> <li>• Chemical Engineering</li> </ul>
2	Applied Mathematics	<ul style="list-style-type: none"> <li>• Mathematics &amp; Computing</li> <li>• Industrial Mathematics</li> <li>• Computational Intelligence</li> </ul>
3	Applied Physics	<ul style="list-style-type: none"> <li>• Engineering Physics</li> <li>• Material Science and Engineering</li> <li>• Photonics</li> </ul>
4	Biotechnology	<ul style="list-style-type: none"> <li>• Biotechnology</li> <li>• Biological Computing</li> <li>• Public Health</li> </ul>
5	Civil Engineering	<ul style="list-style-type: none"> <li>• Civil Engineering</li> <li>• Sustainable Infrastructure</li> <li>• Disaster mitigation and management</li> </ul>
6	Computer Science and Engineering	<ul style="list-style-type: none"> <li>• Computer Engineering</li> <li>• Machine Learning</li> </ul>
7	Software Engineering	<ul style="list-style-type: none"> <li>• Software Engineering</li> <li>• Data Analytics</li> </ul>
8	Electrical Engineering	<ul style="list-style-type: none"> <li>• Electrical Engineering</li> <li>• Machine learning of IOT System</li> <li>• Power Electronics and Renewable Energy Systems</li> </ul>

9	Electronics and Communication Engineering	<ul style="list-style-type: none"> <li>• Electronics and Communication Engineering</li> <li>• VLSI Design</li> <li>• Signal Processing and Machine Intelligence</li> <li>• Advanced Communication Systems</li> </ul>
10	Environmental Engineering	<ul style="list-style-type: none"> <li>• Environmental Engineering</li> <li>• Environmental Remediation &amp; Control</li> <li>• Sustainability and Environmental Management</li> </ul>
11	Mechanical Engineering	<ul style="list-style-type: none"> <li>• Mechanical Engineering</li> <li>• Production Engineering</li> <li>• Automotive Engineering</li> <li>• Energy Technology</li> <li>• Operations and Supply Chain Management</li> <li>• Design and Automation Engineering</li> </ul>
12	Information Technology	<ul style="list-style-type: none"> <li>• Information Technology</li> <li>• Cyber Forensics and Cyber Laws</li> <li>• Artificial Intelligence &amp; Machine Learning</li> </ul>
13	DSM	<ul style="list-style-type: none"> <li>• Marketing Management</li> <li>• Supply Chain Management</li> <li>• Innovation and Entrepreneurship</li> </ul>
14	Department of Humanities	<ul style="list-style-type: none"> <li>• Economics</li> <li>• English</li> </ul>
15	Department of Design	<ul style="list-style-type: none"> <li>• Industrial Design</li> </ul>

# DISCIPLINES OF QUALIFYING DEGREE FOR RESPECTIVE M.TECH. SPECIALIZATION

S. No.	Department / Programme Name	Qualifying Degree
<b>1. APPLIED CHEMISTRY</b>		
	Polymer Technology (PTE)	B.E. / B. Tech / M.Sc. / Integrated M.Sc. in any of the following Discipline: Biochemical Engineering; Biomedical Engineering; Biomedical Instrumentation; Biotechnology; Chemical Engineering; Chemical Technology; Environmental Engineering; Environmental Science & Technology; Fibre & Textiles Processing Technology; Food Engineering & Technology; Food Processing Engineering; Processing & Preservation Engineering; Leather / Foot Wear Technology; Man- Made Textile Technology; Material Science and Engineering/Technology; Mechanical Engineering; Paint Technology; Petro-Chemical Engineering; Petroleum Engineering/Technology; Petroleum Refinery Engineering; Plastic Engineering/Technology; Polymer Engineering / Science / Technology; Polymer Science & Chemical Technology; Printing & Packing Technology; Production & Industrial Engineering; Rubber Technology; Textile Engineering/ Technology; Biochemistry; Bio-Sciences; Chemistry: Industrial Chemistry; Nano Science Technology; Pharmaceutical Chemistry & Technology; Pharmaceutical Science; Textile Chemistry.
<b>2. APPLIED PHYSICS</b>		
	Material Science & Technology (MST)	M.Sc. / B.E. / B.Tech. in Physics / Applied Physics/ Chemistry/ Material Science/ Nuclear Physics/ Solid State Physics/ Astrophysics/ Electronics/ Electrical/ Biotechnology/ Allied life Science/ Engineering Physics / Biophysics/ Biochemistry/ Environmental Science/ M.Sc. (CS/IT with Mathematics, Physics and Chemistry at B.Sc. level)
<b>3. BIOTECHNOLOGY</b>		
	Bioinformatics (BIO)	B.Tech/ M.Sc. degree in Biotechnology/ Bioinformatics / Biomedical Engineering/ Biochemical Engineering/ Life Sciences/ Biochemistry/ Computer Science/ Electronics & Communications/ Pharmaceutical Sciences & Technology.
	Industrial Biotechnology (IBT)	B.Tech/ M. Tech / M.Sc. degree/ degree in Biotechnology / Bioinformatics / Biomedical Engineering / Biochemical Engineering / Life Sciences / Biochemistry / Zoology / Botany / Plant Molecular Biology / Microbiology / Environmental Sciences / Agriculture Sciences / Pharmaceutical Sciences & Technology.
<b>4. CIVIL ENGINEERING</b>		
	Geotechnical Engineering (GTE)	B. Tech./B.E. Degree in CE
	Hydraulics & Water Resources Engineering (HRE)	
	Structural Engineering (STE)	
<b>5. COMPUTER SCIENCE AND ENGINEERING</b>		
	Computer Science & Engineering (CSE)	B.E /B.Tech. in CSE/IT/SE/MC/ECE/ EE/ EEE /CC/MoC/BDA /DA/ IoT/ DS/ CyS/ AI/ ML/ CTIS/CST/CS&IT/Co/CSD/Eo/EoE/Eo&Co/ EI&Co/MI/ICT/IS/IC/ CS&CE OR B.E /B.Tech. in CSE/CS/IT/SE/MC (with Specialization in CC/ MoC/ BDA/ DA/ IoT/ DS/ CyS/ AI/ML/CTIS)
	Artificial Intelligence (AI)	OR M.Sc. in (CS/ IT/ SE/ CC/MoC/BDA/DA/IoT/DS/CyS/AI/ML/ CTIS/ Inf)



6. INFORMATION TECHNOLOGY		
	Information Technology (IT)	B.E /B.Tech. in CSE/IT/SE/MC/ECE/ EE/ EEE /CC/MoC/BDA /DA/ IoT/ DS/ CyS/ AI/ ML/ CTIS/CST/CS&IT/Co/CSD/Eo/EoE/Eo&Co/ EI&Co/MI/ICT/IS/IC/ CS&CE OR B.E /B.Tech. in CSE/CS/IT/SE/MC (with Specialization in CC/ MoC/ BDA/ DA/ IoT/ DS/ CyS/ AI/ML/CTIS) OR M.Sc. in (CS/ IT/ SE/ CC/MoC/BDA/DA/IoT/DS/CyS/AI/ML/ CTIS/ Inf)
7. ELECTRONICS & COMMUNICATIONS ENGINEERING		
	Microwave and Optical Communication (MOC)	B.E./B. Tech. Exam in ECE/ EP/ M.Sc. Electronics/ M.Sc.in Physics with Electronics/ Radio Physics/ Solid State Physics.
	Signal Processing & Digital Design (SPD)	B.E./B. Tech Exam in Electrical and Electronics/ Electronics & Instrumentation/Electronics & Computer Engg/Electronics & control/ Applied Electronics and Instrumentation Engg./Electronics Instrumentation & control Engg./Electrical
	VLSI Design and Embedded System (VLS)	
8. ELECTRICAL ENGINEERING		
	Control & Instrumentation (C&I)	B. Tech./B.E. Exam in EE/EEE/ECE/C&I
	Power System (PSY)	B. Tech./B.E .Exam in EE/EEE
	Power Electronics And Systems (PES)	B. Tech./B.E .Exam in EE/EEE/C&I
9. ENVIRONMENT ENGINEERING		
	Environmental Engineering (ENE)	B. Tech./B.E. Exam in EN/CE/BT/CH/ PT
10. MECHANICAL ENGINEERING		
	Production Engineering (PRD)	B. Tech / B.E. in ME / PE / Industrial / Manufacturing Science/ Welding Technology / Automation Engineering.
	Thermal Engineering (THE)	B.Tech / B.E. in ME/PE/AE/ Manufacturing Science / Automation Engineering
	Industrial Engineering and Management (IEM)	Students with Bachelor degree (4-years degree programmes; B.Tech./B.E/B. Sc.Engg., and equivalent degree) in any branch of Engineering will be eligible to take admission in this programme. This programme (M.Tech. in Industrial Engineering and Management) is interdisciplinary in nature.
	Energy Systems and Management (ESM)	Students with a Bachelor degree (4-years degree Programmes; B.Tech./B.E/B. Sc.Engg., and equivalent degree) in any engineering branch will be eligible to take admission in this programme. This programme (M.Tech. in Energy Systems and Management) is interdisciplinary.
	Computer Aided Analysis and Design (CAAD)	Students with Bachelor degree (4-years degree Programmes; B.Tech./B.E/B. Sc.Engg., and equivalent degree) in the branch of Mechanical Engineering or Production Engineering or Civil Engineering will be eligible to take admission in this programme.
11 SOFTWARE ENGINEERING		
	Software Engineering (SWE)	B.Tech/ B.E. Degree in CS/ CSE/ Computer Engineering/CST /CSD/ CS & IT/ SE/ IT/ IT&MI/ICT/ IS/ IC/ CS&CE/ MC/ ECE/ EEE/ CC/ MoC/ BDA/ DA/IoT/DS/ CyS/AI/ML/ CT/ Information Security OR
	Data Science (DS)	M.C.A IM.Sc. (CS/ CSE/ Computer Engineering/ CST / CSD/ CS & IT/ SE/ IT/ Inf/ CC/MoC/ BDA/DA/IoT/DS/CyS/AI/ML/ CTIS) (with Mathematics at B.Sc./ B.C.A level).

**12 MULTI-DISCIPLINARY CENTRE FOR GEO-INFORMATICS**

Geoinformatics (GINF)	(a) BE/B.Tech. or equivalent in any branch of Engineering and Technology (b) M.Sc. in Architecture/Remote Sensing / GIS / Geomatics / Geo-informatics/ Geography / Environment Science /Mathematics/ Physics/ Geology (c) MCA or equivalent
-----------------------	---

## Details of the Abbreviations used for Qualifying Degree

Electrical Engineering	EE
Civil Engineering	CE
Information Technology	IT
Software Engineering	SE
Automobile Engineering, Automotive Engineering	AE
Production, Production & Industrial Engineering, Industrial Engineering	PE
Control & Instrumentation, Instrumentation & Control Engineering	C&I
Biochemical Engineering	BE
Electronics & Communication Engineering, Electronics Engineering	ECE
Engineering Physics	EP
Computers	Co
Electrical Engineering	EE
Cloud Computing	CC
Internet of Things	IoT
Cyber Security	CyS
Machine Learning	ML
Cloud Technology and Information Security	CTIS
Computer Science and Technology	CST
Electronics and Computer	Eo&Co
Electrical and Computers	EI&Co
Mathematical Innovations	MI
Computer Science and Communication Engineering	CS&CE
Information Technology and Mathematical Innovations	IT&MI

Computer Science & Engineering	CSE
Mechanical Engineering	ME
Environmental Engineering	EN
Electrical & Electronics Engineering	EEE
Mathematics and Computing	MC
Metallurgical and Material Science, Metallurgical Engineering	MT
Biotechnology, Industrial Biotechnology, Bioinformatics	BT
Chemical Engineering	CH
Artificial Intelligence	AI
Computer Science	CS
Polymer Technology	PT
Mobile Computing	MoC
Big Data Analytics	BDA
Data Analytics	DA
Data Science	DS
Computer Science & IT	CS&IT
Computer Science & Design	CSD
Electronics	Eo
Electronics Engineering	EoE
Information and Communication Technology	ICT
Information Science	IS
Information and Communication	IC
Informatics	Inf
Computer Technology	CT

## UG & PG Degree Eligibility for Respective PhD Discipline

Academic Department	Disciplines Offered	Discipline Specific Eligibility Criteria
Applied Chemistry	1. Chemistry	Master's degree in Sciences in Chemistry / Applied Chemistry / Industrial Chemistry / Polymer Chemistry / Polymer Science / Electrochemistry / Pharmaceutical Chemistry / Material Chemistry / Material Science / Drug Chemistry / Medicinal Chemistry / Green Chemistry / Environment Chemistry / Environment Science / Chemical Science / Biochemistry / Nanomaterials / Nanoscience / Food Science / Metallurgy / Agrochemicals / and Chemistry related disciplines with a minimum 60% marks in aggregate or equivalent CGPA as determined by DTU.
	2. Chemical Engineering	Master's degree in Engineering/Technology in Chemical Engineering/ Chemical Technology / Polymer Engineering / Polymer Technology / Textile Engineering / Textile Technology / Nanotechnology / Biotechnology / Biochemical Technology / Biochemical Engineering / Bioprocess Engineering / Environmental Engineering / Food Technology and Chemical Engineering related disciplines with a minimum 60% marks in aggregate or equivalent CGPA as determined by DTU. OR Bachelor's degree in Engineering/Technology in Chemical Engineering/ Chemical Technology / Polymer Engineering / Polymer Technology / Textile Engineering / Textile Technology / Nanotechnology/ Biotechnology/ Biochemical technology/ Biochemical Engineering / Bioprocess Engineering / Environmental Engineering / Food Technology and Chemical Engineering related disciplines with a minimum 75% marks in aggregate or equivalent CGPA and having proven research capability.
Applied Physics	1. Physics	Master's degree in Engineering / Technology / Sciences in relevant disciplines or equivalent with a minimum 60% marks in aggregate or equivalent CGPA as determined by DTU. OR Bachelor's degree in Engineering/Technology in relevant discipline or equivalent with a minimum 75% marks in aggregate or equivalent CGPA and having proven research capability.
	2. Engineering Physics	Master's degree in Engineering/Technology in relevant disciplines or equivalent with a minimum 60% marks in aggregate or equivalent CGPA as determined by DTU. OR Bachelor's degree in Engineering/Technology/Sciences in relevant discipline or equivalent with a minimum 75% marks in aggregate or equivalent CGPA and having proven research capability.
Applied Mathematics	1. Mathematics	Master's degree in Sciences / Arts in relevant disciplines or equivalent with a minimum 60% marks in aggregate or equivalent CGPA as determined by DTU.
	2. Mathematics and Computing	Bachelor's degree in Engineering / Technology and Master's degree in Engineering / Technology in relevant disciplines or equivalent with a minimum 60% marks in aggregate or equivalent CGPA as determined by DTU. OR Bachelor's degree in Engineering/Technology in relevant discipline or equivalent with a minimum 75% in aggregate or equivalent CGPA as determined by DTU and having proven research capability.



Biotechnology	Biotechnology	<p>Master's degree in Engineering/Technology/Sciences in relevant discipline or equivalent with a minimum 60% marks in aggregate or equivalent CGPA as determined by DTU.</p> <p>OR</p> <p>Bachelor's degree in Engineering/Technology relevant to Life Sciences with a minimum 75% marks in aggregate or equivalent CGPA and having proven research capability.</p>
Civil Engineering	Civil Engineering	<p>Master's degree in Engineering / Technology in relevant discipline or equivalent with a minimum 60% marks in aggregate or equivalent CGPA as determined by DTU.</p> <p>OR</p> <p>Bachelor's degree in Engineering / Technology in relevant discipline or equivalent with a minimum 75% marks in aggregate or equivalent CGPA and having proven research capability.</p>
Computer Science & Engineering	Computer Science & Engineering	<p>Bachelor's degree in Engineering/Technology and Master's degree in Engineering / Technology in Computer Science and Engineering / Software Engineering / Information Technology/ Mathematics and Computing / Electronics and Communication Engineering or equivalent with a minimum 60% in aggregate or equivalent CGPA as determined by DTU.</p> <p>OR</p> <p>Bachelor's degree in Sciences/Computer Applications and Master's degree in Computer Applications (with Mathematics at B.Sc./B.C.A level) with a minimum 75% in aggregate or equivalent CGPA as determined by DTU and having proven research capability.</p> <p>OR</p> <p>Bachelor's degree in Engineering/Technology in Computer Science and Engineering/Software Engineering/Information Technology/ Mathematics and Computing/Electronics and Communication Engineering. or equivalent with a minimum 75% in aggregate or equivalent CGPA as determined by DTU and having proven research capability.</p>
Delhi School of Management	Management	<p>Master's degree in Engineering / Technology / Sciences / Management/ Humanities/Commerce and Social Sciences in relevant discipline or equivalent with a minimum 60% marks in aggregate or equivalent CGPA as determined by DTU.</p> <p>OR</p> <p>Bachelor's degree in Engineering/Technology in relevant discipline or equivalent with a minimum 75% marks in aggregate or equivalent CGPA and having proven research capability.</p>
Electrical Engineering	Electrical Engineering	<p>Master's degree in Engineering / Technology in relevant discipline or equivalent with a minimum 60% marks in aggregate or equivalent CGPA as determined by DTU.</p> <p>OR</p> <p>Bachelor's degree in Engineering / Technology in relevant discipline or equivalent with a minimum 75% marks in aggregate or equivalent CGPA and having proven research capability.</p>
	COE-EVRT	<p>Master's degree in Engineering / Technology in relevant discipline or equivalent with a minimum 60% marks in aggregate or equivalent CGPA as determined by DTU.</p> <p>OR</p> <p>Bachelor's degree in Engineering / Technology in relevant discipline or equivalent with a minimum 75% marks in aggregate or equivalent CGPA and having proven research capability.</p>

Electronics & Communication Engineering	Electronics & Communication Engineering	<p>Bachelor's degree in Engineering/Technology and Master's degree in Engineering/Technology in in ECE/ Electrical and Electronics Engineering/ EE/ CSE/ SE/ IT /M &amp; C or equivalent with a minimum 60% marks in aggregate or equivalent CGPA as determined by DTU.</p> <p>OR</p> <p>Bachelor's degree in Engineering/Technology in in ECE/ Electrical and Electronics Engineering/ EE/ CSE/ SE/ IT /M &amp; C or equivalent with a minimum 75% marks in aggregate or equivalent CGPA and having proven research capability.</p>
Environmental Engineering	Environmental Engineering	<p>Master's degree in Engineering / Technology / Sciences / Management in the relevant discipline (Environmental Engineering / Civil Engg. / Biotechnology / Chemical Engg. / other relevant branch) or equivalent with a minimum 60% marks in aggregate or equivalent CGPA as determined by DTU.</p> <p>OR</p> <p>Bachelor's degree in Engineering / Technology in relevant discipline or equivalent with a minimum 75% marks in aggregate or equivalent CGPA and having proven research capability.</p>
Humanities	1.English	Master's degree in English or relevant branch or equivalent with a minimum 60% marks in aggregate or equivalent CGPA as determined by DTU.
	2.Economics	Master's degree in Economics or relevant branch or equivalent with a minimum 60% marks in aggregate or equivalent CGPA as determined by DTU.
Information Technology	Information Technology	<p>Bachelor's degree in Engineering/Technology and Master's degree in Engineering / Technology in Computer Science and Engineering / Software Engineering / Information Technology/ Mathematics and Computing / Electronics and Communication Engineering or equivalent with a minimum 60% in aggregate or equivalent CGPA as determined by DTU.</p> <p>OR</p> <p>Bachelor's degree in Sciences/Computer Applications and Master's degree in Computer Applications (with Mathematics at B.Sc./B.C.A level) with a minimum 75% in aggregate or equivalent CGPA as determined by DTU and having proven research capability.</p> <p>OR</p> <p>Bachelor's degree in Engineering/Technology in Computer Science and Engineering/Software Engineering/Information Technology/ Mathematics and Computing/Electronics and Communication Engineering. or equivalent with a minimum 75% in aggregate or equivalent CGPA as determined by DTU and having proven research capability.</p>
Mechanical Engineering	Mechanical Engineering	<p>Master's degree in Engineering/Technology or a Master's degree by Research in Engineering/Technology in Mechanical with specialization in Thermal/ Production / Design / Industrial Engineering having a minimum 60% marks in aggregate or equivalent CGPA as determined by DTU with Bachelor's degree in Engineering / Technology in Mechanical / Production / Production and Industrial / Mechanical and Automation / Automobile Engineering or Equivalent.</p> <p>OR</p> <p>Bachelor's degree in Engineering/Technology in Mechanical/ Production / Production and Industrial/ Mechanical and Automation / Automobile Engineering or equivalent having a minimum 75% marks in aggregate or equivalent CGPA and having proven research capability.</p>

Software Engineering	1. Software Engineering	<p>Bachelor's degree in Engineering/Technology and Master's degree in Engineering / Technology in Computer Science and Engineering / Software Engineering / Information Technology/ Mathematics and Computing / Electronics and Communication Engineering or equivalent with a minimum 60% in aggregate or equivalent CGPA as determined by DTU.</p> <p>OR</p> <p>Bachelor's degree in Sciences/Computer Applications and Master's degree in Computer Applications (with Mathematics at B.Sc./B.C.A level) with a minimum 75% in aggregate or equivalent CGPA as determined by DTU and having proven research capability.</p>
	2. Computer Science	<p>OR</p> <p>Bachelor's degree in Engineering/Technology in Computer Science and Engineering/Software Engineering/Information Technology/ Mathematics and Computing/Electronics and Communication Engineering. or equivalent with a minimum 75% in aggregate or equivalent CGPA as determined by DTU and having proven research capability.</p>
USME	1. Management	<p>Master's degree in Management/Engineering/Technology/ Commerce/ Economics and other behavioral sciences and allied relevant disciplines, or equivalent, with a minimum 60% marks in aggregate or equivalent CGPA as determined by DTU.</p> <p>OR</p> <p>Bachelor's degree in Engineering/Technology in relevant discipline or equivalent with a minimum 75% marks in aggregate or equivalent CGPA and having proven research capability.</p>
	2. Economics	<p>Master's degree in Economics / Business Economics /Behavioral economics/allied social sciences; humanities and management in relevant disciplines; or equivalent with a minimum 60% marks in aggregate or equivalent CGPA as determined by the DTU.</p> <p>OR</p> <p>Bachelor's degree in Engineering/Technology in relevant discipline or equivalent with a minimum 75% marks in aggregate or equivalent CGPA and having proven research capability.</p>
	3. Innovation, Entrepreneurship & Venture Development	<p>Master's degree in Management/Entrepreneurship/ allied areas related to innovation, venture development and in relevant disciplines, or equivalent, with a minimum 60% marks in aggregate or equivalent CGPA as determined by the DTU.</p> <p>OR</p> <p>Bachelor's degree in Engineering/Technology in relevant discipline or equivalent with a minimum 75% marks in aggregate or equivalent CGPA and having proven research capability.</p>
Design	Design	<p>Master's degree in Design or equivalent with a minimum 60% marks in aggregate or equivalent CGPA as determined by DTU.</p>
Centre of Excellence for the Science of Happiness	Science for Happiness	<p>Master's degree in Engineering/Technology/ Science/Management/ Social Science /Arts/Humanities/ Psychology /Medicine and other behavioral Sciences and allied relevant disciplines or equivalent, with minimum 60% marks in aggregate or equivalent CGPA as determined by DTU.</p> <p>OR</p> <p>Bachelor's degree in Engineering/Technology or equivalent with a minimum 75% marks in aggregate or equivalent CGPA and having proven research capability.</p>



Multidisciplinary Centre for Geoinformatics (MCG)	Geoinformatics	<p>Master's Degree in Engineering/ Technology or equivalent in any branch/discipline with a minimum 60% marks in aggregate or equivalent CGPA as determined by DTU.</p> <p>OR</p> <p>Master's degree in Computer Applications/Sciences or equivalent in any branch/discipline with a minimum 60% marks in aggregate or equivalent CGPA as determined by DTU.</p> <p>OR</p> <p>Bachelor's degree in Engineering/Technology in relevant discipline or equivalent with a minimum 75% marks in aggregate or equivalent CGPA and having proven research capability.</p>
Vinod Dham Centre of Excellence for Semiconductors and Microelectronics (VDCoE4SM)	Semiconductors and Microelectronics	<p>Master's degree in Engineering / Technology / Sciences in relevant disciplines or equivalent with a minimum 60% marks in aggregate or equivalent CGPA as determined by DTU.</p> <p>OR</p> <p>Bachelor's degree in Engineering/Technology in relevant discipline or equivalent with a minimum 75% marks in aggregate or equivalent CGPA and having proven research capability.</p>



## RANKINGS

Delhi Technological University (DTU) has consistently been ranked among the best 10 engineering institutions in India, as per the various Independent Surveys on the country's Best Engineering Institutions. In 2024, India Today ranked us 6th in the University category and 8th amongst Government Engineering Colleges. The 2024 NIRF Rankings placed Delhi Technological University at the 27th position among engineering institutions.

## ACCREDITATIONS

Delhi Technological University (DTU), formerly known as Delhi College of Engineering, received its first NAAC accreditation in 2019, achieving a Cumulative Grade Point Average (CGPA) of 3.22. DTU achieved CGPA 3.47 in 2nd cycle of NAAC in 2025. These accreditations reflect DTU's commitment to maintaining high educational standards and continuous improvement in its academic and administrative processes. In addition, every year, Delhi Technological University proposes and attains approval and accreditation for a gamut of programmes through the NBA. At present 6 UG programmes and 9 PG programmes are accredited by NBA at DTU.

## FACULTY @ DTU

The university boasts a distinguished pool of experienced and emerging faculty members, each demonstrating exceptional qualifications in their respective domains of specialization, complemented by substantial national and international exposure. To foster a vibrant research and innovation ecosystem, the university extends comprehensive support through initiatives including funding for students' innovative projects, financial assistance for international internships, and substantial research grants accessible to all faculty members. In recognition of scholarly excellence, the university confers prestigious Research Excellence Awards annually across three meticulously designed categories: Outstanding Research Awards, Premier Research Awards, and Commendable Research Awards. These distinguished honors remain accessible to all researchers affiliated with DTU. Furthermore, the university allocates significant resources to enable faculty and students to organize and participate in various faculty development programmes, seminars, and conferences, thereby enhancing academic discourse and professional growth.

## INFRASTRUCTURE @ DTU

DTU has 164 acres of a lush green, tech-savvy main campus, consisting of 16 academic departments, research centres, and residences for students, faculty, and staff. At present the university has around 15,000 students in its undergraduate, postgraduate, and Ph. D programmes. DTU has an EDUSAT Studio utilized for recording of lectures, events, and talks. Besides the main campus, the university has another campus in East Delhi, where some of the M.B.A. programmes, B. A (Hons.) Economics and B.B.A. programmes are offered. The newly established East Delhi Campus of DTU has been functional since the 2017-18 academic session. It is located at Vivek Vihar, Phase II, Delhi. This campus endeavours to provide quality education, research, and innovation in the emerging areas of management, relevant to industry and society.

## ACADEMIC FACILITIES

The Institute has all basic infrastructural facilities for conducting undergraduate courses satisfactorily. It has got adequate number of well qualified and experienced faculty members and technical and supporting staff.

For more information regarding department-wise details, please visit [www.dtu.ac.in](http://www.dtu.ac.in)

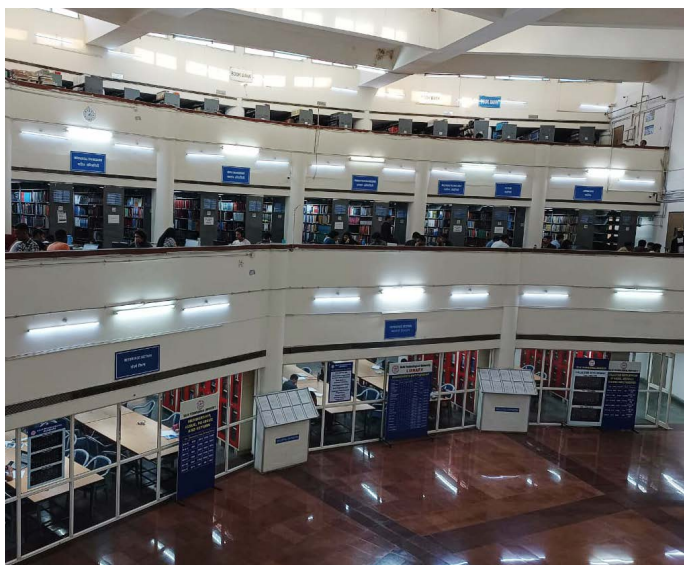
## COMPUTER CENTRE

DTU has a well-equipped centralized computer centre to cater to the needs of students and faculty in the university. It is housed, in a magnificent state-of-the-art building having specialized laboratories to provide variety of platforms and computing environment for UG, PG and research students. The centre possesses a number of servers and over 230 Dell intel core i5 computer systems. In addition, the centre has more than 5 servers hosting different applications such as websites & application portals with softwares, SPSS, Mathematica, MatLab, DNS, LDAP, NetSSM, etc. for use by UG/PG/PhD students for their academic projects and research work. The centre is networked through high-end intelligent Juniper/Avaya/CISCO/Brocade/ Ruckus manageable switches secured with Palo Alto Firewall and two network leased lines of 10 Gbps link of NKN and 1Gbps link of Reliance Jio with shared bandwidth in different pipes for LAN & Wi-Fi connectivity in the Library, Academic Departments, Administrative Blocks, Sports Complex, Faculty Residence and Hostel blocks of the campus.



## CENTRAL LIBRARY

DTU (Formerly DCE) was established in 1941 and is a premier technical institute ranked 7 in India. Its Library System consists of a Central Library and 15 departmental libraries which collectively support the teaching, research and extension programmes of the Institute. All students, faculty members and employees of the Institute are entitled to make use of the Library facilities on taking library membership. The Library, besides having a huge collection of books on engineering, science and humanities, offers library services through its various divisions. Initially setup in 1941, the Central Library moved to its new building in May, 2004. To make the Delhi College of Engineering Library a 21st century Knowledge Centre and to facilitate the transition of today's engineering society to a knowledge base society of tomorrow, the knowledge generated by the faculty and students of DTU has been digitized and made accessible through Intranet or Internet. Along with the automation of library services, we have moved towards the digitization of library resources, so that the services of Virtual Library and Knowledge Centre may be provided parallel with the Traditional Library.

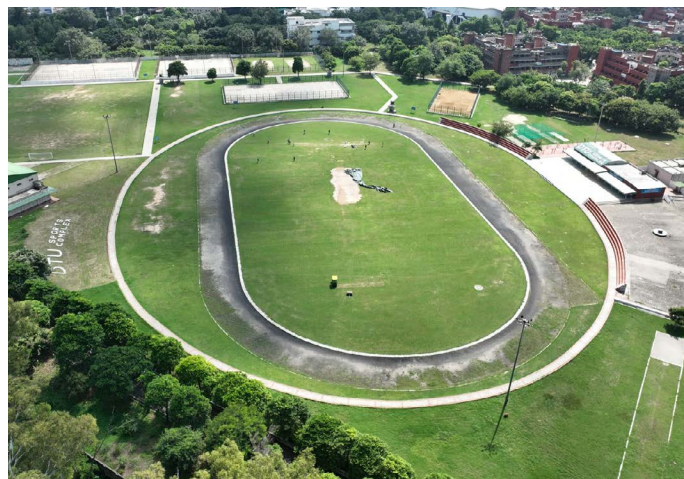


Delhi Technological University library, with a collection of more than 2,00,000 text and reference books and a large number of e-journals, e-books, manuscripts in digital format, is one of the highly rich engineering libraries in the country. Library provides remote access facility to all its readers by using cloud based remote access software. The library also helps researchers to maintain proper integrity and ethics and provides the facility of similarity check to avoid

instances of plagiarism. It has a very active presence on Facebook. Various current awareness services and user information literacy programmes are continually organized throughout the year. The library building is a four storied, aesthetically designed, centrally air-conditioned structure with a seating capacity of 500. Library is updated regularly by way of adding new literature in the form of text books, reference books, reports, proceedings, abstracts & indexes, encyclopaedias, data books, standards (National & International), Journals & database on CD-ROM.

## SPORTS FACILITIES

At Delhi Technological University (DTU), we believe in nurturing both the mind and body. Our extensive sports infrastructure is designed to promote fitness, teamwork, and excellence across a wide range of disciplines. Students have access to world-class facilities that support both recreational play and professional training. At DTU, sports are an integral part of campus life, offering students opportunities to stay active, compete, and build lifelong skills.



## MEDICAL FACILITIES

DTU has a well-equipped health care centre. The medical practitioners are available to the students requiring medical attention. The healthcare centre has specialized medical practitioners including ENT, dental care, Physiotherapy, Nutrition, Gynaecology and Obstetrics etc. Further, medical camps are also being organized by the University on regular basis. In addition, Ambulance facility is also available in case of emergency. The University has also tie-ups with the major hospitals of Delhi for emergency cases.





ample opportunity to develop various qualities as each hostel is equipped with recreation room, reading room, mess and gymnasium. Additionally, every hostel subscribes to the latest magazines and newspapers for the residents. The hostels are connected to the campus via the campus wide wi-fi network and LAN which enables the residents to browse the internet and access the online library resources for their academic and research related work. The information of all available accommodation will be posted on the University website. However, limited seats could be provided inside the University premises. In addition, the mess facility at the University can be availed by all the students. The University has separate hostels for international students.



## BANK AND POST OFFICE

The State Bank of India has a branch with ATM facilities operating from the Institute campus. There is Sub-Post Office in the name of "DCE" in the Institute campus and its PIN Code is 110042.



## HOSTEL AND ACCOMMODATION

Hostel life is one of the most enjoyable and memorable times of one's life. There are 11 boy's hostels and three girl's hostels in DTU, besides, one separate hostel for international students (boys). Each hostel in the campus gives each individual



# BEYOND ACADEMICS @ DTU

## DTU STUDENTS' WELFARE

Apart from the unique student-centric academic curriculum, the university has instituted several programmes and provisions for the welfare and holistic development of its students. The university annually organizes cultural and technical festivals. Team from UAS DTU technical society, achieved the 3rd position in the IMAV 2023 competition held in Aachen, Germany, while also earning the distinction of being recognized as the best team in Asia and also secured 3rd in both the technical design paper and overall category while competing against 75 teams in SAE DDC 2023.

## EVENTS AND FESTIVALS

The university organizes annual cultural, literary, sports and technical festivals. These festivals not just provide an opportunity to the students to connect with the professional world, but also display their creative and technical skills in several interesting events and activities organized during the fests. The ENGIFEST, one of the most well attended student's cultural event in northern India and the YUVAAN, the literary Fest, is annual cultural extravaganza of the university and offers a good mix of literary, cultural, and entertainment events. The INVICTUS is annual technical festival of the university where all technical societies of the university host various technical activities and competition. The AAHVAAAN is the annual sports fest organized by DTU sports council.

## CLUB ACTIVITIES

At DTU, the diverse range of societies brings together culture, technology, and non-tech fields, fostering a vibrant and inclusive campus community. Under the guidance of the Student Body these clubs collaborate to create a dynamic environment where students can explore their interests, showcase their talents, and engage in interdisciplinary activities. Whether it's through cultural events, tech fests, or creative workshops, these clubs play a pivotal role in enriching the student experience and promoting a holistic approach to personal and professional development.

## E-CELL EVENTS

Elevate- The grand orientation of E-Cell DTU, Accelerate- a powerhouse of passion, talent, and entrepreneurial spirit, Execute Hackathon- E-Cell DTU's flagship hackathon.

## NCC

The National Cadet Corps (NCC) of Delhi Technological University was founded in 2020 with a vision to instill discipline, leadership, and a strong sense of national service among the youth. In a short span, DTU NCC has grown into one of the most dynamic and high-aspiring student organizations on campus, driven by the goal of shaping responsible and capable future leaders. With a strength of 145 Senior Division (SD) cadets and 79 Senior Wing (SW) cadets, DTU NCC stands as one of the largest and most active NCC units across Delhi colleges. The unit has consistently demonstrated excellence, earning recognition as the Best Senior Division (SD) Institution in Delhi, a testament to the dedication and performance of its cadets.

## SPORTS & OTHER OUTDOOR ACTIVITIES

A large number of bright and capable scholars, having graduated from the Institute, have distinguished themselves by means of their extraordinary achievements in their chosen professions and by their contributions to the society at large.

## CENTRE FOR EXTENSION & FIELD OUTREACH

Centre for Extension and Field Outreach was established in DTU in the year 2018. The various activities/ programme performed by the Centre is to sensitize the students to develop social values, widespread their responsibilities and knowledge in societal issues and problems by making them to involve with the community people. DTU is a Participating Institute under "Unnat Bharat Abhyan"- a Project of Ministry of HRD, Govt. of India and adopted five villages and are conducting classes in their schools. Directorate of Education, Govt. of NCT of Delhi awarded a Project "Youth for Education" and has launched "Desh Ke Mentor", which is one of the largest mentoring programmes in school education.



# DTU INNOVATION & INCUBATION FOUNDATION (DTU IIF)

DTU INNOVATION AND INCUBATION FOUNDATION (DTU IIF) (Established under Section 8 Licence Number 107658, with the company's CIN being U74999DL2016NPL305531, in accordance with the Companies Act of the Government of India) serves as the Incubation Centre, specifically a Technology Business Incubator (TBI), for Delhi Technological University (DTU).

DTU IIF was founded following the policy guidelines set by the Government of the National Capital Territory of Delhi, based on the summary recommendations of a working group appointed by the Government of NCT of Delhi, under order NO.F.75(73)/2015-16/Incubation/ADPL/321-330 dated 5/6/15, for the following objectives:

- To foster a culture of entrepreneurship, start-ups, and intellectual property creation that leads to value generation, job opportunities, and contributes positively to social and economic development.
- To support the establishment of incubation centres that provide incubation infrastructure—such as space, computing resources, connectivity, common tools—and an environment conducive to co-working, collaboration, and innovation.
- To develop entrepreneurship challenges based on existing issues to encourage innovation.



## PROGRAMMES OFFERED



### DTU-IIF Incubation Programmes

Empowering innovators and entrepreneurs at DTU-IIF to turn visionary ideas into impactful ventures.



### Nidhi iTBI-DST

NIDHI iTBI DST fuels women-led startups with financial support for early-stage growth and investment readiness.



### Startup India Seed Fund Scheme (SISFS)

SISFS provides financial aid to startups for development, trials, and market entry through incubators.



### NASSCOM

NASSCOM Foundation's Programmes drive tech-led social change through education, skilling, and digital inclusion initiatives.



# CENTRES OF EXCELLENCE



## **Vinod Dham Centre of Excellence for Semiconductors and Microelectronics (VD CoE45M)**

Focuses on advancing research and training in semiconductors and IC manufacturing. Hosts major events like faculty development programs and international conferences, supporting India's semiconductor mission.



## **Nodal Centre for Excellence in Energy Transition (NCEET)**

Aims to drive R&D in clean energy technologies and energy efficiency. Engages in collaborative projects and workshops to promote renewable energy adoption and reduce carbon footprints.



## **Centre of Excellence for Electric Vehicles and Related Technologies (CoE for EVRT)**

Promotes R&D in electric vehicle technologies with support from DKDF and DTU. Offers training, internships, and interdisciplinary research in motors, charging infrastructure, and battery systems.



## **Centre of Excellence in Disaster Risk Reduction (COEDRR)**

Aims to innovate technologies for mitigating natural and man-made disasters. Plans include offering elective courses, M.Tech., and joint Ph.D. programs in collaboration with national and global institutions.



## **Centre of Excellence for The Science of Happiness**

Promotes Well-being through research, training, and workshops on happiness and mental health. Seeks to enhance personal growth, productivity, and community harmony at DTU.



## **Entrepreneurship Development Centre (EDC)**

Cultivates an entrepreneurial ecosystem through workshops, competitions, and mentoring. Encourages techno-entrepreneurship and social ventures via collaborations like Enactus



## **Centre for Community Development and Research (CCDR)**

Works on sustainable livelihood and inclusive growth through tech-driven grassroots initiatives. Engages in community-focused research, frugal innovations, and capacity-building.



## **Multidisciplinary Centre for Geoinformatics (MCG)**

Aims to become a premier hub for geospatial education and research, Collaborates with DST, ISRO, and other agencies, offering MTech. and Ph.D. programs in geoinformatics.

# DCE-DTU ALUMNI NETWORK

DCE-DTU Alumni are serving leadership positions in many of the best-known companies in India and abroad, in marketing, finance, human resources, information technology, research & analytics, innovation & entrepreneurship. And the worldwide network of illustrious alumni includes world-known personalities like Prof. Vinod Dham (Father of the Pentium Chip), Dr. Raj Soin (Founder, CEO of Soin, and LLC), Prof. D. Yogi. Goswami (Inventor, Author, Entrepreneur and Educator), Dr. Durga Das Aggarwal (President, CEO Piping Technology & Products, Inc). Mr. Vijay Shekhar Sharma, (Founder of Paytm), Sh. Karnal Singh (Former Chief of Enforcement Directorate), Sh. Arun Goyal (Member-CERC & Former

Secretary, Cabinet Secretariat).

Alumni have been traditionally contributing generously towards placement opportunities, sponsorships/ Fellowship programmes and infrastructural developments of their alma mater. Donations for Raj Soin Hall by Dr. Soin, Clean Energy Research Centre establishment by Prof. Yogi Goswami, and several scholarships for the students of DTU have shown the dedication of the alumni for the betterment of their alma mater.

## NOTABLE ALUMNI



**Dr. Durga Das Agrawal**

**Founder, President and CEO of Piping Technology & Products, Inc.**

(Alumnus- 1967, Mechanical Engineering)



**Shri. Vijay Shekhar Sharma**

**Founder and CEO, Paytm**

(Alumnus- 1998, Electronics & Communication Engineering)



**Shri Vinod Dham**

**Father of the Pentium Chip And Venture Capitalist**

(Alumnus-1971, Electrical Engineering)



**Dr. Dharendra Yogi Goswami**

**World Famous inventor, Entrepreneur, Author and Educator**

(Alumnus-1969, Mechanical Engineering)



**Dr. Raj Soin**

**Founder of Modern Technologies Corporation (MTC) & Soin LLC**

(Alumnus- 1969, Mechanical Engineering)



**Shri. Mahesh Joshi**

**Global Business Executive and Author**

(Alumnus- 1982, Mechanical Engineering)



**Sh. Shiv Agrawal**

**Entrepreneurs & Philanthropist**

(1967 batch)



**Shri. Karnal Singh**

**Former Chief of Enforcement**

(Alumnus- 1979, Electrical Engineering)

# ABOUT OFFICE OF INTERNATIONAL AFFAIRS (OIA)



## VISION

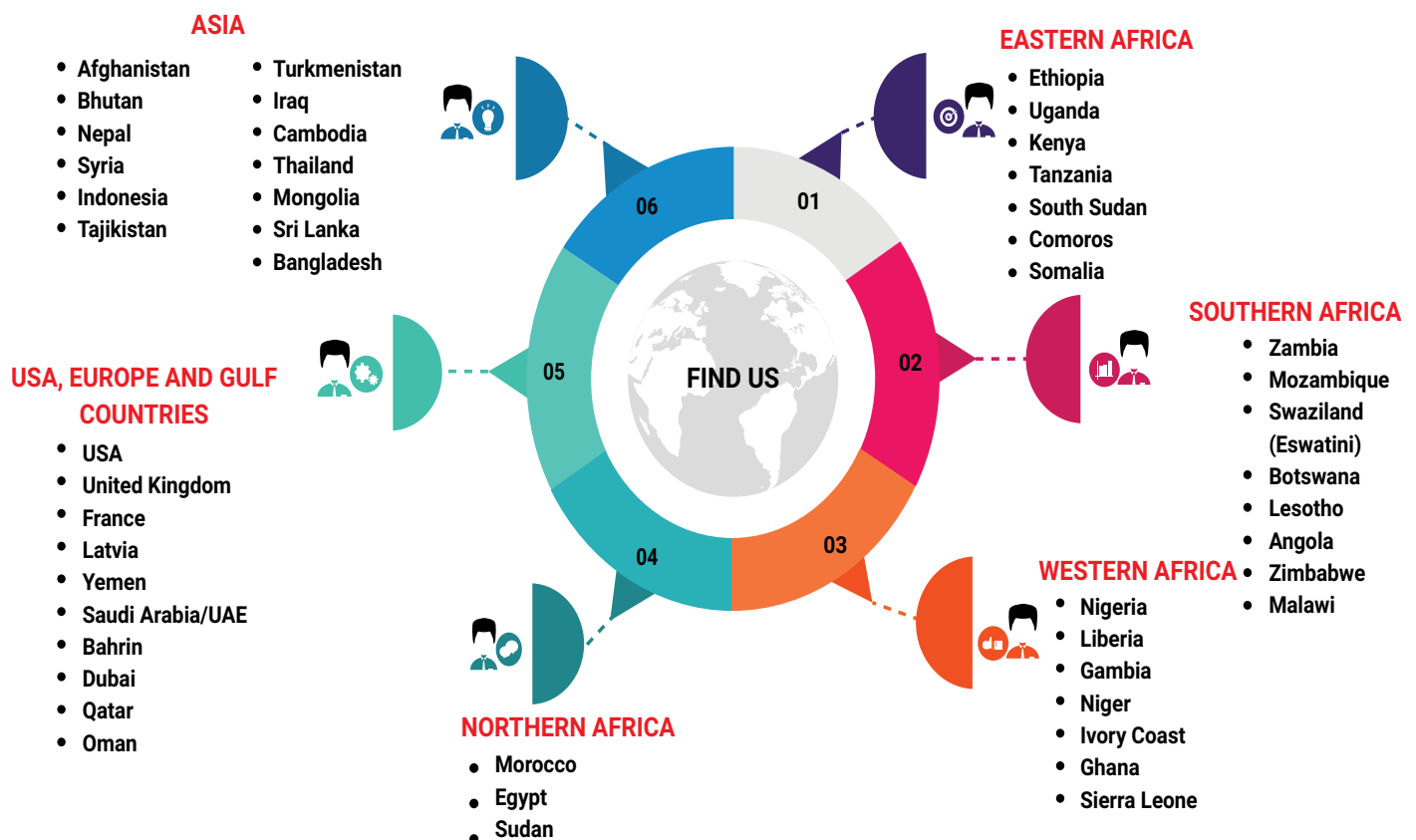
To act as key node in the national and international knowledge network providing information and access to global opportunities.



## MISSION

- To engage DTU students and faculty members in educational and research experiences internationally.
- To facilitate integration of international students and scholars into DTU world of knowledge.
- To Build international bridge to foster excellence in Science, Technology & Management.
- To exchange information through collaborations and projection of academic expertise of DTU for the benefit of society.

## OUR GLOBAL REACH





## EDUCATION SYSTEM

Continuous and comprehensive evaluation with Choice Based Credit System (CBCS) is practiced, based on periodic homework assignments and examinations, intended to ensure that the student is aware of his/her level.

### Creation of ABC (Academic Bank of Credits)/ APAAR(Automated Permanent Academic Account Registry) ID for Students

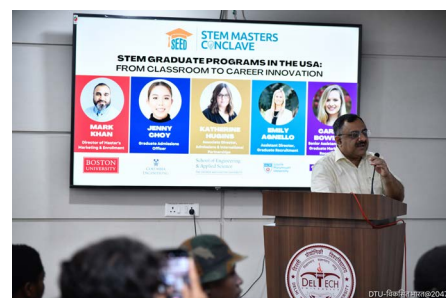
As per the order of the Ministry of Education (MOE), creation of ABC/APAAR ID for all students is mandatory. This ID will serve as a unique identifier for students, facilitating seamless tracking of their academic progress and other educational activities. The APAAR ID acts as a link to DigiLocker,

an online repository, where students securely store essential documents like exam results. Linked to the Academic Bank of Credits (ABC) via the APAAR ID, it receives academic credits from institutions through the National Academic Depository. APAAR, which stands for Automated Permanent Academic Account Registry, is a specialized identification system designed for all students in India. This initiative is part of the 'One Nation, One Student ID' programme launched by the Union government, aligning with the new National Education Policy of 2020.

### Awards and scholarships for International Students (ICCR, SII)

International students have opportunity to avail scholarships by the Indian Council for Cultural Relations (ICCR) and Study in India (SII) programme, providing financial support for their academic pursuits at the university.

## GLIMPSES OF VISITS BY INTERNATIONAL UNIVERSITIES





# INTERNATIONAL COLLABORATIONS





# ADMISSION PROCESS

## DEFINITIONS

### 1. Indian Nationals Studying Abroad:

An Indian citizen who is ordinarily residing outside India and holds an Indian Passport and must have had at least 3 (three) years of education in a Foreign country during the last 6 (six) years and must pass the qualifying examination (inclusive of 11th and 12th standard or equivalent) from abroad only.

### 2. Overseas Citizen of India (OCI):

- a. The citizens of another country (except Pakistan and Bangladesh) but was a citizen of India at the time of, or at any time after, the commencement of the constitution; or was eligible to become a citizen of India at the time of the commencement of the constitution; or belong to a territory that became part of India after the 15th day of August, 1974; or who is a child or a grand- child or a great grandchild of such a citizen; or
- b. A person, who is minor child of a person mentioned in clause (a); or

- c. A person, who is a minor child, and whose both parents are citizens of India or one of the parents is a citizen of India; or
- d. Spouse of foreign origin, of a citizen of India or spouse of foreign origin, of an Overseas Citizen of India Cardholder registered under section 7A, Citizenship Act 1955.

And as per Gazette Notification No. 26011/01/2014-IC.I dated 09.01/2015 the Persons of Indian Origin (PIO) cardholders shall now be OCI cardholders. The student admitted under this category can do all activities except research work for which special permission is required from the Indian Mission/Post/FRRO concerned.

### 3. Foreign Nationals:

Citizens of all countries other than India, who are not of Indian Origin as defined under OCI. **Further, Foreign nationals must have overseas passport.**

## ELIGIBILITY

### ESSENTIAL ACADEMIC ELIGIBILITY FOR UNDERGRADUATE PROGRAMME

60% aggregate marks or equivalent marks in all subjects of qualifying examination i.e. 10 +2 or equivalent from any system of education as recognized by the Association of Indian Universities (AIU).

#### I. Additional requirement/qualifications (UG) for M3 (a)

- a. Embassies sponsored Candidates fulfilling the Criteria Laid by Embassies.

#### II. Additional requirement/qualifications (UG) for M3 (b)

- a. Mandatory qualifying Scholastic Aptitude test (SAT)/American College Testing (ACT) in Mathematics, English and another core subject (if applicable) with minimum 60 percentiles.
- b. The candidate should be in possession of valid TOEFL/IELTS score not less than 60 percentiles.

- c. Merit list shall be prepared on the aggregate SAT and/or ACT score as per concordance tables obtained. In case if similar score in SAT and/ or ACT score is observed, then preference is given to higher marks obtained in Mathematics and Physics. In case marks obtained in Mathematics & Physics are also same then preference is given to the candidate with older age.

#### III. Additional requirement/qualifications (UG) for M3 (c)

##### a. For admission to B.Tech programme

(i) Applicant should have 60 % marks or 6.00 CGPA on 10 points grade or equivalent grades in aggregate for all subjects of qualifying examination i.e. Senior Secondary [10+2] or equivalent from any system of education as recognized by the Association of Indian Universities (AIU) with: Mathematics and Physics as compulsory subjects and any one of these as optional subjects.

- Chemistry
- Bio-Technology
- Computer Science
- Biology

(ii) Mandatory qualifying JEE (Mains) score in Mathematics, Physics, and Chemistry with minimum 60 percentiles.

(iii) Merit list shall be prepared on the basis of JEE Mains Score.

#### **b. For admission to BBA programme**

(i) Applicant should have 60% marks or 6.00 CGPA on 10 points grade in aggregate for all subjects of qualifying examination i.e. Senior Secondary [10+2] or equivalent from any system of education as recognized by the Association of Indian Universities (AIU).

(ii) English as compulsory subject.

#### **c. For admission to BA (Hons.)-Economics programme**

(i) Applicant should have 60 % marks or 6.00 CGPA on 10 points grade or equivalent grades in aggregate for all subjects of qualifying examination i.e. Senior Secondary [10+2] or equivalent from any system of education as recognized by the Association of Indian Universities (AIU).

(ii) Mathematics as compulsory subject.

#### **d. For admission to B.Des programme**

(i) Applicant should have 60 % marks or 6.00 CGPA on 10 points grade or equivalent grades in aggregate for all subjects of qualifying examination i.e. Senior Secondary [10+2] or equivalent from any system of education as recognized by the Association of Indian Universities (AIU).

#### **Any other requirement prescribed by the University from time to time.**

Applicant should have 60% aggregate marks or 6.00 CGPA on a 10-point grade or equivalent grades for B.Tech, BBA, B.A (Economics) and B.DES students in aggregate for all subjects of qualifying examination i.e. Senior Secondary [10+2] or equivalent from any system of education as recognized by the Association of Indian Universities (AIU) with:

a) Physics and Mathematics as compulsory subjects and any one of the following subjects – Chemistry, Bio-technology, Computer Science, Biology – for admission to B.Tech programme.

b) Mathematics as one of the compulsory subject for admission to BA (H) Economics.

c) English as a compulsory subject for admission to BBA programme.

d) Any stream of courses for B.Des programme

e) Any other requirement prescribed by the University from time to time.

## **ESSENTIAL ACADEMIC ELIGIBILITY FOR POSTGRADUATE PROGRAMME**

### **Essential Academic Eligibility for Postgraduate Programme in Engineering, Management, Arts, Design and Science through M3 mode**

- Applicants should have 60% aggregate marks or 6.00 CGPA on a 10-point grade or equivalent grades in aggregates in their qualifying degree recognized as equivalent by the AIU/UGC/AICTE/other statutory bodies as applicable.
- For M.Tech programme : Applicant must have passed the qualifying examination i.e. four/five-year undergraduate programme in Engineering/Technology or equivalent in relevant disciplines pertaining to that respective M. Tech programme of application
- For MBA programme : An appropriate UG degree from any stream of education with valid CAT/MAT score.
- For MA (Economics) programme : An appropriate UG degree in Economics/Statistics/Mathematics.
- For M.Des programme : An appropriate UG degree from any stream of education.
- For M.Sc programme : Following will be criteria as per relevant discipline.

- Mathematics: BA/B.Sc. (Gen or Hons.) with Mathematics as one of the main subjects.
- Physics: B.Sc. (Gen or Hons) with Physics as one of main subject.
- Biotechnology: B.Sc. (Gen or Hons) with Biology/Biotechnology as one of main subject.
- Chemistry: B.Sc/ (Gen or Hons) with Chemistry as one of the main subjects.

vii. Additional requirements/ qualifications:

- The candidate should be in possession of valid TOEFL/IELTS score not less than 60 percentiles.
- Admission shall be done on the basis of their aggregate score in the qualifying degree.
- Any other requirement prescribed by the University from time to time.

## ESSENTIAL ACADEMIC ELIGIBILITY FOR DOCTOR OF PHILOSOPHY

### Essential Academic Eligibility for PhD Programme through M3 mode:

- Applicants should have 60% aggregate marks or 6.00 CGPA on a 10-point grade or equivalent grades in aggregates in their qualifying degree recognized as equivalent by the AIU/UGC/ AICTE/other statutory bodies as applicable.
- The minimum entry qualification shall be a Master's degree in Engineering/Technology/ Science/Economics/ Humanities/ Design/ Management or any other qualification recognized by University. In exceptional case, candidates having Bachelor in Engineering / Technology degree with minimum of 75% marks in aggregate or equivalent CGPA will also be considered for admission.
- Any other requirement prescribed by the University from time to time.

## GENERAL ELIGIBILITY CRITERION FOR INTERNATIONAL STUDENTS

- The Degrees/Certificates of the International Students should have been recognized and approved by the Association of Indian Universities (AIU) as equivalent to the corresponding Indian Degrees/ Certificates.
- They must hold a valid passport from their respective countries.
- Evidence of required academic performance must be in the form of certified English transcripts listing all the programmes with the grades or marks earned. Transcripts in languages other than English are not acceptable.
- If the applicant has passed the qualifying examination where grades are awarded:
  - Where the grade sheet does not mention the equivalent percentage of marks from grade points, the candidate should submit a certificate of conversion from the concerned Institution/ University mentioning either the converted percentage or the formula for the actual conversion of grade point average to percentage of marks
  - Where the grade sheet itself mentions the equivalent percentage of marks from the grade points or formula for such conversion, the candidate should get both sides of the Degree/ Grade Sheet photocopied showing the equivalent percentage of marks/ conversion formula and enclose with the Application Form.

### Notes:

Candidates admitted to any course in this University shall not be eligible to pursue simultaneously any other full time course in this or in any other University/Institution.

An international student who has been granted admission to a particular course shall not be allowed to change the course.

All the International students required to produce medical fitness certificate. As per government rules all International students entering India on student visa have to be tested for HIV and will not be given admission if found to be positive. The following medical fitness test need to be performed. Only those students who are found medically fit shall be admitted to different programmes of the University.

HIV Test (AIDS Test)

Chest Check-up (through X-Ray)

Hepatitis surface Antigen (HBsAg) before admission

Corona Virus Test

General Medical Test

All international students will be required to obtain medical insurance cover for the entire course of study, initially for the first year and then subsequently renew it for further years.

## AGE

Maximum age as on 31st August, 2025: For all Undergraduate programmes where entry qualification is 12th class – 25 years. For all Postgraduate programmes where entry qualification is undergraduate degree - 35 years.



## MODE OF ADMISSION

Seats reserved under Foreign Nationals/Indian Nationals studying abroad/Overseas Citizen of India are further defined through 3 modes of admission i.e. M1, M2, M3.

### Mode 1 (M1) Direct Admission of Student Abroad (DASA)

- DASA is a scheme of Ministry of Human Resource Development, Government of India (GoI) for admissions to premier institutions of India.
- Under this category the student directly apply through DASA portal. Complete information regarding the procedure of admission, eligibility and payment of fee will be available on DASA website (link: <http://www/dasanit.org>)
- Admission shall be done centrally through the central counseling held at nodal centre, appointed by DASA Ministry of Human Resource and Development, Government of India (MHRD, GoI) on yearly basis.

### Mode 2 (M2) Indian Council of Cultural Relation (ICCR)

- a) foreign nationals from SAARC and ASEAN (details given in seat matrix M2)
- b) foreign nationals from countries other than (a) above: (details given in seat matrix)
- c) Under this category the application of the candidates shall be routed directly through Indian Council of Cultural Relation (ICCR), (link: [http://A2A\\_scholarships.iccr.gov.in/](http://A2A_scholarships.iccr.gov.in/)) GoI. The form shall be accompanied by relevant documents attested by the authorized persons of their respective countries.

#### Additional requirement / qualifications (UG)

- The candidate should be in possession of valid TOEFL/IELTS score.
- Merit list shall be prepared on the basis of their aggregate score in the subject Mathematics, Physics and the other core subject.
- Any other requirement prescribed by the University from time to time.

#### Additional requirement / qualifications (PG)

- Admission shall be done on the basis of their aggregate score in the qualifying degree

#### Additional requirement / qualifications (PhD)

- Candidates for online interview shall be short listed on the basis of aggregate score in qualifying degree. The selection will be based on online interview by respective Department Research Committee.

### Mode 3 (M3) DTU Portal/Embassies in India.

- a) Embassies Sponsored foreign nationals;
- b) Foreign nationals with SAT/ACT (60 percentile) and IELTS/TOFEL (60 percentile);
- c) Foreign nationals with JEE score and 12th Marks (not less than 60% in PCM) (details given in seat matrix.)

#### Application Process Mode 3:

Under this category candidates shall apply on-line in the prescribed format before the last date directly on the web portal of the office of International Affairs (link: [https:// dtu.ac.in/](https://dtu.ac.in/)), Delhi Technological University. The form shall be accompanied by relevant documents attested by the authorized persons of their respective countries. Alternatively, the application may be received from the foreign embassies in India. Information to Ministry of External Affairs, GoI, FRRO be made before reporting of student for the admission.

#### I. Additional requirement/qualifications (UG) for M3 (a)

Embassies sponsored candidates fulfilling the criteria laid by Embassies.

#### II. Additional requirement/qualifications (UG) for M3 (b)

- a. Mandatory qualifying Scholastic Aptitude test (SAT)/American College Testing (ACT) in Mathematics, English and another core subject (if applicable) with minimum 60 percentiles.

- b. The candidate should be in possession of valid TOEFL/IELTS Score not less than 60 percentiles.
- c. Merit list shall be prepared on the aggregate SAT and/or ACT score as per concordance tables obtained. In case if similar Score in SAT and/ or ACT Score is observed, then preference is given to the candidate with older age.

### III. Additional requirement/qualifications (UG) for M3 (c)

#### a. For admission to B.Tech programme

(i) Applicant should have 60 % marks or 6.00 CGPA on 10 points grade or equivalent grades in aggregate for all subjects of qualifying examination i.e. Senior Secondary (10+2] or equivalent from any system of education as recognized by the ASSOciation of Indian Universities (AIU) with: Mathematics and Physics as Compulsory subjects and any one of these as optional subjects.

- Chemistry
- Bio-Technology
- Computer Science
- Biology

(ii) Mandatory qualifying JEE (Mains) score in Mathematics, Physics, and Chemistry with minimum 60 percentiles.

(iii) Merit list shall be prepared on the basis of JEE Mains Score.

#### b. For admission to BBA programme

(i) Applicant should have 60 % marks or 6.00 CGPA on 10 points grade in aggregate for all subjects of qualifying examination i.e. Senior Secondary [10+2] or equivalent from any system of education as recognized by the Association of Indian Universities (AIU).

(ii) English as compulsory subject.

#### c. For admission to BA (Hons.)-Economics programme

(i) Applicant should have 60 % marks or 6.00 CGPA on 10 points grade or equivalent grades in aggregate for all subjects of qualifying examination i.e. Senior Secondary (10+2] or equivalent from any system of education as recognized by the Association of Indian Universities (AIU).

(ii) Mathematics as compulsory subject.

#### d. For admission to B.Des programme

(i) Applicant should have 60 % marks or 6.00 CGPA on 10 points grade or equivalent grades in aggregate for all subjects of qualifying examination i.e. Senior Secondary [10+2] or equivalent from any system of education as recognized by the Association of Indian Universities (AIU).

(ii) Any other requirement prescribed by the University from time to time.

### Additional requirement/qualifications (PG)

1. Should have a valid TOEFL/IELTS score not less than 60 percentiles.
2. Admission shall be done on the basis of their aggregate score in the qualifying degree or CAT/ MAT score (which ever is applicable).
3. Any other requirement prescribed by the University from time to time.

### Additional requirement/qualifications (PhD)

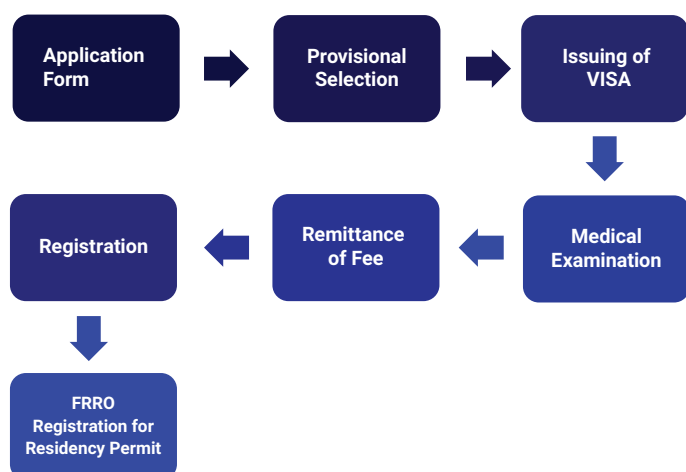
1. Short listing will be done on the basis of aggregate score in qualifying degree, and admission will be decided on the basis of online interview at par with regular PhD admission.

---

Note: Students who are awarded scholarships by any Indian/ International agencies shall be given preference for admission and for hostel accommodation.

The admission in any course will not be granted on predicted scores.

## ADMISSION PROCEDURE



## APPLICATION PROCEDURE FOR INTERNATIONAL STUDENTS

International students have to follow the following steps for applying for admission in different programmes of the University:

- Apply online for mode 1, 2, and 3 mentioned at section titled Mode of Admission.
- The Office of International Affairs, Delhi Technological University will get the application scrutinized.
- The admission committee, DTU will compile the information on the basis of scrutiny, prepare the merit list and send the list of selected and wait listed candidates for the approval of Hon'ble Vice-Chancellor DTU, and upon getting the same, issue a provisional admission letter to the applicants.
- The provisional admission letter covering all the important information of the student like Name of the student, Passport No., Name of the programme, etc. for meeting VISA requirements, will be sent to the student (under mode 3). However, the information regarding admission, registration etc shall also be sent to applicants under mode 1 and mode 2. In addition, all applicants are advised to regularly visit DTU website ([www.dtu.ac.in](http://www.dtu.ac.in)) for updates.
- The applicant will pursue for visa formalities from the country of domicile (student visa for Bachelors and Masters Courses and Research visa for Ph.D. course).
- After getting the Student/Research VISA, the student shall be required to pay the University fee (refer Fee Structure).

vii. Admission of International students will be confirmed only after verification of original certificates, medical fitness test and payment of required fees.

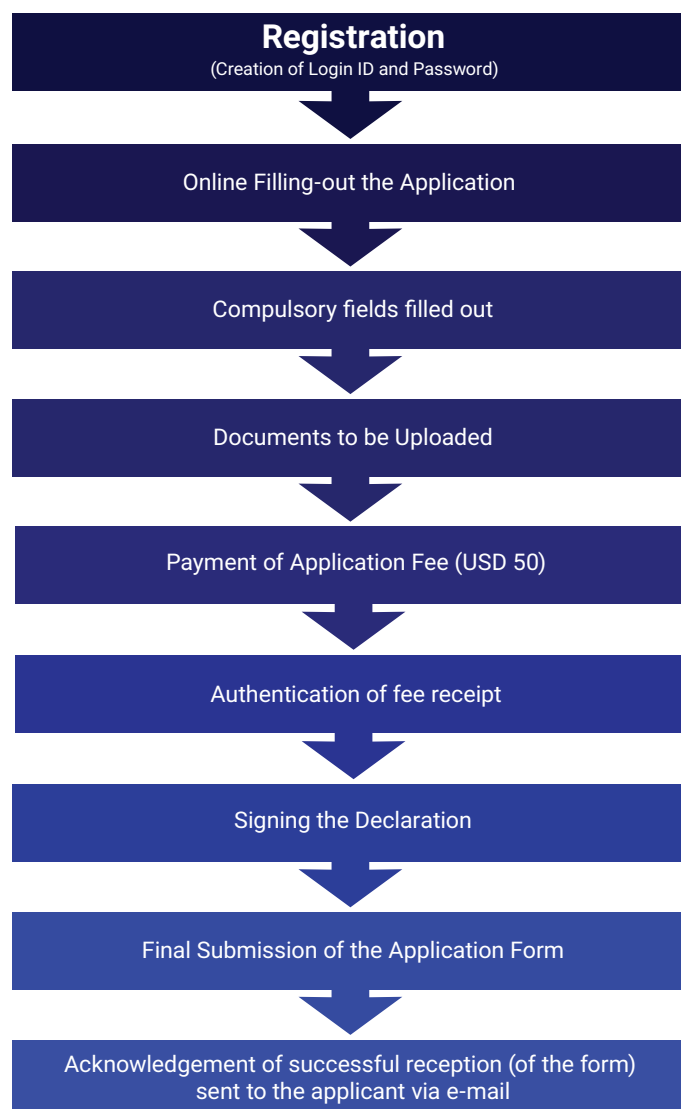
viii. Within two weeks of arrival in India foreign national students are required to register their names for residency permit with the Foreigner Regional Registration Office (FRRO) and with the local police.

### Notes:

No International student shall be admitted to Delhi Technological University without a Research/Student's Visa issued in the name of Delhi Technological University. No other endorsement in lieu of Research/Student's VISA is acceptable.

Research Visa/ Student visa will be extended by the Ministry of Home Affairs after ascertaining that student is pursuing his/her studies as per regulations of the University and is receiving remittance through proper banking channels.

## ONLINE APPLICATION FILLING PROCESS FOR DTU PORTAL





## CHECK LIST OF CERTIFICATES TO BE PRODUCED TO SECURE FINAL ADMISSION

- Original and two sets of photocopies of Academic Transcripts.
- Original and two sets of photocopies of Passing/Qualifying Certificate.
- Tuition Fees – Admission fee and one year tuition fee/fees deposit receipt or proof for Admission fee and one year tuition fee deposited by student.
- 6 passport size color photographs
- Original work experience certificate (if applicable).
- Parent's acceptance letter along with ID/original Residential Address Proof.
- Original and Photocopy of Passport, National ID, OCI card (whichever is applicable).
- Photocopy of Indian Visa stamped in the name of DTU (NOT MANDATORY for Bhutanese and Nepalese students).
- Residential Permit obtained from Local Foreigner Regional Registration Office (FRRO) (NOT MANDATORY for Bhutanese and Nepalese students)/No objection or recommendation letter from the respective Embassy.
- Sponsorship letter from student Organization or Ministry of Education of concerned country (if applicable).
- Medical Fitness certificate for health and fitness from any registered doctor/medical practitioner (No HIV/AIDS/Corona Virus Certificate).

## MISCELLANEOUS INFORMATION

### PAYMENT OF FEE FOR FOREIGN NATIONALS ADMITTED THROUGH VARIOUS MODES\*

APPLICATION FEE: AT THE TIME OF SUBMISSION OF APPLICATION, A NON-REFUNDABLE FEE OF US\$ 50 (US DOLLAR FIFTY ONLY) SHALL BE REMITTED.

REGISTRATION FEE: AN AMOUNT OF US\$ 250 TO BE CHARGED TOWARDS NON-REFUNDABLE COMPREHENSIVE REGISTRATION FEE ON ARRIVAL AT DTU.

The students admitted through Mode 1 shall be exempted since they have already paid the same to DASA secretariat.

In respect of the students admitted through Mode 2, the ICCR shall remit (US\$ 300) on their behalf.

It is also to mention that the fee submitted against the admission will be non-refundable.

\*The fee structure may revise after subsequent year of admission subject to notification issued by the University.

### MEDICAL INSURANCE

International students must have adequate medical insurance during their entire stay in India on their own initiative.

### PROOF OF RESIDENCY

Copy of the passport issued by their respective countries (Nationals of Nepal who do not have a passport, copy of Authenticated Citizenship Card has to be submitted).

### VISA REQUIREMENTS

All foreign nationals are required to obtain Student/Research VISA before they can register at Delhi Technological University.

Candidates are advised to visit the website [www.dtu.ac.in](http://www.dtu.ac.in) regularly for updates and other details about the entire admission process.

Note: The University reserves the right to: Cancel the admission at any stage, if any false information is detected even after the admission of the candidate is confirmed/ he/she is pursuing studies at DTU. Cancel the admission at any stage, if the student breaches the law of the land.

## SEAT MATRIX

### Seat Matrix for B.Tech Programme

Discipline	M1	M2(a)	M2(b)	M3(a)	M3(b)	M3(c)
ECE	12	2	5	4	4	10
CSE	24	5	10	7	7	20
ME	15	3	6	4	4	12
EE	15	3	6	5	5	12
PIE	4	1	1	1	1	3
CE	8	1	3	2	2	6
ENE	4	1	1	1	1	3
CHE	4	1	1	1	1	3
IT	9	2	4	3	3	8
BT	4	1	2	1	1	3
SE	9	2	4	3	3	7
MAM	4	1	2	1	1	3
EP	6	1	2	2	2	4
MC	9	1	4	3	3	7
<b>Total</b>						<b>380</b>

### Seat Matrix for B.Des. BA(Eco) and BBA Programme

Discipline	M2 (a)	M2 (b)	M3 (a)	M3 (b)
B.Des	1	3	7	7
BA Eco	2	3	11	11
BBA	2	3	11	11
<b>Total</b>				<b>72</b>

Note: The unfilled seats of a particular specialization under M2 and M3 categories shall be filled from waitlisted applicants of others modes for all UG and PG programmes.

### Seat Matrix for Various PG Programmes

	Discipline	M1	M2(a)	M2(b)	M3(a)	M3(b)
M.Tech	PTE	1		1		2
	MST	1		1		2
	BIO	1		1		2
	IBT	1		1		2
	GTE	1		1		2
	HRE	1		1		2
	STE	1		1		2
	GINF	1		1		2
	CSE	1		1		2
	SWE	1		1		2
	ISY	1		1		2
	AI	1		1		2
	MOCE	1		1		2
	SPD	1		1		2
	VLS	1		1		2
	PES	1		1		2
	C&I	1		1		2
	PSY	1		1		2
	ENE	1		1		2
	PIE	1		1		2
	THE	1		1		2
	DSC	1		1		2
	IEM	1		1		2
ESM	1		1		2	
CAD	1		1		2	
Sub - Total					100	
M.Sc	Mathematics	-		2		7
	Physics	-		2		7
	Chemistry	-		2		7
	Biotechnology	-		2		7
	Sub - Total					36
M.Des	M.Des	-		2		9
	Sub - Total					11
MA(E)	M.A. Eco	-		2		7
	Sub - Total					9
MBA	MBA	14		8		19
	MBA- (B.A.)	2		1		3
	MBA- (IEV)	1		1		2
	Sub - Total					51
Total					207	

Note: For PG Seat Matrix bifurcation of M2(a) & M2(b) is not followed as number of seats is 01 in case of M.Tech & less in case of other PG Programme.

## FEE STRUCTURE

### Tuition and other component of fee for UG and PG students admitted in Academic Year 2025-26

(Mode 1: DASA Admission)

Category/ Fee	Tuition Fee* (per year)	Other fee ( Non- Government Component)* (per year)
UG Non SAARC and Non ASEAN	US\$ 8000	US\$ 1112
UG SAARC and ASEAN	US\$ 4000	US\$ 1112
CIWG through DASA	Rs. 1,63,000	Rs. 84,700
PG Non SAARC and Non ASEAN	US\$ 5000	US\$ 1112
PG SAARC and ASEAN	US\$ 2500	US\$ 1112

### Tuition and other component of fee for UG and PG students admitted in Academic Year 2025-26

(Mode 2: ICCR Admission)

Category/ Fee	Tuition Fee* (per year)	Other fee ( Non- Government Component)* (per year)
UG Non SAARC and Non ASEAN	US\$ 5000	US\$ 1112
UG SAARC and ASEAN	US\$ 2500	US\$ 1112
PG Non SAARC and Non ASEAN	US\$ 5000	US\$ 1112
PG SAARC and ASEAN	US\$ 2500	US\$ 1112

### Tuition and other component of fee for UG and PG students admitted in Academic Year 2025-26

(Mode 3: Direct Admission)

Category/ Fee	Tuition Fee* (per year)	Other fee ( Non- Government Component)* (per year)
UG (B.Tech./B.Des)	US\$ 8000	US\$ 1112
UG (BBA/BA(H))	US\$ 6000	US\$ 1112
PG	US\$ 5000	US\$ 1112

\* Non Refundable

**Note:** Subsequently fee may revise subject to notification issued by the university. For detailed fee structure refer to fee notification dated 12/6/2025.

## FEE PAYMENT DETAILS

All applicants to submit fees in below mentioned account only. In case dollar fees is submitted in INR then it is mandatory to submit bank certified exchange rate (between dollar & INR) of the same date as that of transaction date of fee submission. The fee submission to be done with the exchange rate certified by bank for that day in case fees is submitted in INR.

Bank Name : State Bank of India

Bank Account Holder Name : REGISTRAR, DTU- INTERNATIONAL AFFAIRS

Bank Account Number: 37143752513

Bank IFSC Code: SBIN0010446

Swift code: SBININBB776

Please NOTE that without bank certified exchange rate, the respective fee transaction will not be accepted.

The candidates from Nepal and Bhutan can submit their fee in equivalent Indian Rupees. However, they will be required to get exchange rate certificate from the bankers and submit the same.

Hostel Accommodation and Other - Expenses: The University will host nearby accommodation and help the students to sign a contract with the property owners for their stay. However, limited seats could be provided inside the University premises. The information of all available accommodation will be posted on the University website. All information will be provided by the Hostel office. Those interested, may apply in advance. In addition, the mess facility at the University can be availed by all the students.



## CONDUCT AND DISCIPLINE

i. The conduct of the Students within and outside the premises of the Institute shall be such as is fitting to the students of an institution of national importance.

li As per the order of the Hon'ble Supreme Court of India, ragging in any form is banned in the Institute. Acts of ragging will be considered as gross in discipline and will be severely dealt with.

lii The following acts of omission and or commission shall amount gross violation of the code of conduct and shall invoke disciplinary measures:

(a) Ragging

(b) Lack of courtesy and decorum; indecent behaviour anywhere within or outside the campus.

(c) Wilful damage or removal of any property/ belongings of the Institute/Hosteller of fellow students.

(d) Possession, consumption or distribution of alcoholic drinks or any kind of hallucinogenic drugs.

(e) Mutilation or unauthorized possession of library books

(f) Noisy behaviour, disturbing of studies of fellow students.

(g) Hacking in computer systems (such as entering other person's area without prior permission, manipulation and/or damage of computer hardware and software etc.)

(h) Any other act of gross indiscipline.

(i) Commensurate with the gravity of the offence, the punishment may be reprimand, fine, and expulsion from the hostel, debarring from an examination, rustication on attending classes for a specified period or even out right expulsion from the Institute.

lv For an offence committed in (a) a Hostel, (b) a Department or in a classroom, and (c) elsewhere, the Hostel Superintendent, the Head of the Department and the Dean of Student welfare, respectively, shall have the authority to reprimand or impose fine with the approval of appropriate authority.

V All cases involving punishment other than reprimand shall be reported to the Board of Discipline.

All major acts of indiscipline, which may have serious

implications on students in general, and/or which may warrant a uniform and more formalized nature of investigation, shall be handled by the Board of Discipline.

Cases of adoption of unfair means in an examination shall be reported to the Dean of Academic Affairs for taking appropriate action.

The Institute attaches emphasis on discipline of the students and their character building. The students are expected to maintain discipline of a very high standard. All Rules and regulations of the college and hostels as laid down by the authority and issued from time to time have to be followed by each student.

Students are warned that any kind of activity, which may lead to fatal accident, is strictly prohibited in the Institute campus. Guardians are advised to caution their wards regarding such matter.

Possession of any kind of weapons inside the Institute campus is strictly prohibited.

If any property/equipment in the campus is damaged or, any loss caused to the Institution shall be recovered either directly from those identified students where ever possible or collectively from such group of students or association as responsible for the activity/activities.

Ragging in any form is banned in DTU, and any one indulging in ragging is bound to be punished appropriately. The punishment may include expulsion from the Institution, suspension from the Institution or classes for a limited period or fine with a public apology. The punishment may also take the shape of: (a) with holding of scholarships or other benefits (b) debarring from representation in events (c) with holding of results (d) suspension or expulsion from hostel/mess based on the gravity of offence as per decision of the Board of Discipline.

The authority reserves the right to take action against the students for unsatisfactory conduct or indulging himself/herself in any activities affecting the over-all disciplinary environment of the Institute.

ANNEXURE 1

**AFFIDAVIT BY THE STUDENT**

**(This matter has to be typed on a non-judicial stamp paper of Rs. 20/-)**

1) \_\_\_\_\_ (full name of student with admission/registration/enrolment number)

s/o d/o Mr./Mrs./Ms \_\_\_\_\_ having been admitted to (name of the institution), have received a copy of the UGC Regulations on Curbing the Menace of Ragging in Higher Educational Institutions, 2009, (hereinafter called the "Regulations") carefully read and fully understood the provisions contained in the said Regulations.

2) I have, in particular, perused clause 3 of the Regulations and am aware as to what constitutes ragging.

3) I have also, in particular, perused clause 7 and clause 9.1 of the Regulation and am fully aware of the penal and administrative action that is liable to be taken against me in case I am found guilty of or abetting ragging, actively or passively, or being part of a conspiracy to promote ragging.

4) I hereby solemnly aver and undertake that (a) I will not indulge in any behaviour or act that may be constituted as ragging under clause 3 of the Regulations. (b) I will not participate in or abet or propagate through any act of commission or omission that may be constituted as ragging under clause 3 of the Regulations.

5) I hereby affirm that if found guilty of ragging, I am liable for punishment according to clause 9.1 of the Regulations, without prejudice to any other criminal action that may be taken against me under any penal law or any law for the time being in force.

6) I hereby declare that I have not been expelled or debarred from admission in any institution on account of being found guilty of, abetting or being part of a conspiracy to promote, ragging; and further affirm that, in case the declaration is found to be untrue, I am aware that my admission is liable to be cancelled.

Declared this \_\_\_\_\_ day of \_\_\_\_\_ month of \_\_\_\_\_ year.

Signature of deponent  
Name:

**ANNEXURE III**  
**SELF-DECLARATION**

for getting services from Government Departments/Local Bodies/Autonomous Body under the GNCT of Delhi.

The written declaration as given hereunder will be included at the end of the application form for seeking the services:

I \_\_\_\_\_ son/daughter of Shri \_\_\_\_\_ age \_\_\_\_\_ years resident of \_\_\_\_\_ do hereby affirm and declare that the information given above and in the enclosed documents is true and correct to the best of my knowledge and belief and nothing has been concealed therein. I am well aware that concealment of facts and giving false information is a punishable offence and in case I am guilty of giving false information or concealment of facts herein, I will be liable to be punished with imprisonment and/or fine as per the relevant provisions of law. I also undertake that the benefits availed by me by furnishing such false information or concealment of facts shall be liable to be summarily withdrawn.

Signature \_\_\_\_\_

Full Name in Capital Letters \_\_\_\_\_

Place \_\_\_\_\_

Date:



# THE UNDERTAKING

(Please make the triplicate copies)

I \_\_\_\_\_ (Enrolment No \_\_\_\_\_) do hereby take a pledge that as a student of Delhi Technological University, I shall:

1. Faithfully follow and abide by the ordinance, Statutes and other notifications as issued by DTU from time to time;

2. Carry my identity card with me, especially when I moved out of my hostel/ Place of stay;

3. Not adopt any unfair means before, during or after the examination.

4. Not copy someone other's work or any information from a book / article or internet and shall not insert it in my class work submissions, project, seminar, reports, dissertation, etc., without proper acknowledgement, credit and reference;

5. Not plagiarize the class work submissions, reports, project, dissertation, etc.;

6. Not commit any cyber offence and shall not indulge in any act related to computers/electronics/ information technology which may be construed to be an offence under the Indian Penal Code and / or Cyber Law international protocol on internet use / telephony/ information access, etc.

7. Abide by Ordinance pertaining to maintenance of Discipline.

8. Keep clean my University

I do, hereby, undertake that I shall cooperate and assist in any enquiry and disciplinary proceeding initiated by the University concerning any matter what so ever, including those as given heretofore.

Date \_\_\_\_\_

(Signature of student) \_\_\_\_\_

Name of the Student: \_\_\_\_\_

Signature of the parent \_\_\_\_\_

# CERTIFICATE OF PHYSICAL FITNESS

(To be filled by a Registered Medical Practitioner In the applicant's country of domicile)

Name of Applicant \_\_\_\_\_

Sex M/F \_\_\_\_\_

Marital Status \_\_\_\_\_

Age \_\_\_\_\_ Blood Group \_\_\_\_\_

Nationality \_\_\_\_\_

Address \_\_\_\_\_

(City) \_\_\_\_\_

(Country) \_\_\_\_\_

Telephone No. \_\_\_\_\_

Email Address \_\_\_\_\_

## I. Medical History

(Please give details of any past medical condition which may adversely impact the patient's health at the current time or in the near future).

IA. History of Any Known Illness / Surgery:-

Raised BP - Yes ☐ No ☐ If, yes – on Regular treatment - Yes ☐ No ☐

DMM - Yes ☐ No ☐ If, yes – on Regular treatment - Yes ☐ No ☐

IHD - Yes ☐ No ☐ If, yes – on Regular treatment - Yes ☐ No ☐

Stroke - Yes ☐ No ☐ If, yes – on Regular treatment - Yes ☐ No ☐

Kidney Disease:

Chronic Renal Failure - Yes ☐ No ☐ If, yes – on Regular treatment - Yes ☐ No ☐

### **Any history of Surgery / prolonged hospitalisation (more than 2 weeks)**

Yes/No; If yes, details of illness / injury / surgery with duration of illness/ treatment

Any history of loss of appetite - Yes ☐ No ☐

Any history of loss of weight - Yes ☐ No ☐

Any history of digestive diseases - Yes ☐ No ☐

Family History of DM - Yes ☐ No ☐

Any Known Allergy: If so, is the patient on any medication / precautions? II.

## II. Physical Examination

Medical condition of: -

Height \_\_\_\_\_ Weight \_\_\_\_\_ Chest \_\_\_\_\_

Head \_\_\_\_\_ Nose \_\_\_\_\_ Lungs \_\_\_\_\_

Eyes \_\_\_\_\_ Pharynx \_\_\_\_\_ Heart \_\_\_\_\_

Ears \_\_\_\_\_ Neck \_\_\_\_\_ Reflexes \_\_\_\_\_

Remarks if any :-

## III. Medical Examination

Routine Blood, (including Fasting & P.P.), Urine Test and Chest X-Ray and any other test as deemed fit by the Medical Practitioner (to rule out any chronic disease).

## IV. Summary

1.I believe this applicant IS / IS NOT physically able to carry on a full course of study, involving long hours of work, in a college or university in India.

2.In my opinion the applicant's health and physical condition in general are:

Excellent

Good

Poor

3.I certify that the applicant is up-to-date on routine vaccinations including, among others, MMR, DPT, Varicella, Hepatitis A & B etc.

4.He / She has no physical condition / ailment which would hinder him /her from pursuing a full course of study in India.

5.He / She present no evidence of any communicable disease of any chronic fatigue.

\_\_\_\_\_ ( )

6.He/ She does not have any chronic medical conditions which requires regular and sustained medical treatment.

\_\_\_\_\_ ( )

Note: If answers to 4, 5 and 6 above are positive, please give details in Remarks column below.

REMARKS

DATE

Signature \_\_\_\_\_

Address \_\_\_\_\_

IMPORTANT:

As a protective measure, those planning to study in India are strongly advised to get vaccinated against typhoid/ cholera before coming to India.





DTU-विकसित भारत@2047



DTU-विकसित भारत@2047



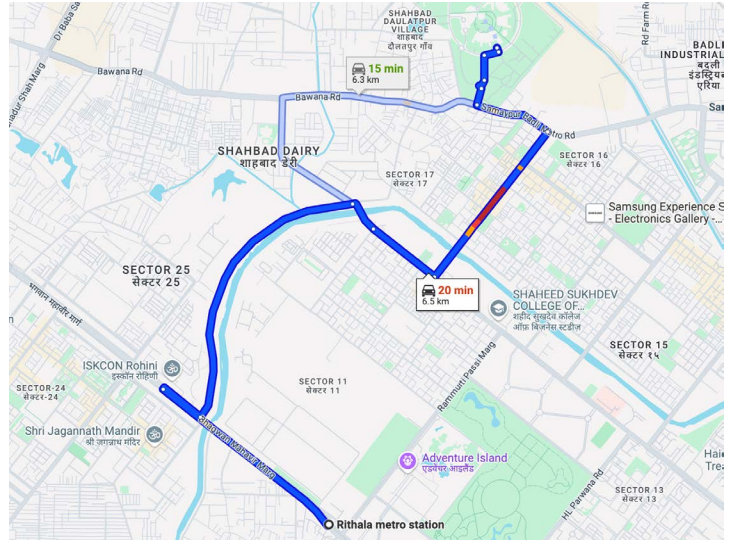
DTU-विकसित भारत@2047



# DELHI TECHNOLOGICAL UNIVERSITY

Delhi Technological University offers a flourishing educational environment, set in the north of a lively metropolitan city. It is situated at Rohini in North West Delhi. The campus is about 32 Km from Indira Gandhi International Airport. For first-time visitors, a prepaid taxi/three-wheeler run by Delhi Police at the airport is the best way of transport to reach Delhi Technological University.

**Communication:** The nearest metro station is Badli metro station. More information about DTU can be accessed at [www.dtu.ac.in](http://www.dtu.ac.in).



## Contact Us

OFFICE OF INTERNATIONAL AFFAIRS

## DELHI TECHNOLOGICAL UNIVERSITY

Shahbad Daultpur, Delhi-110042, India

Phone: +91-11-27871018 | Email: [internation\\_admission@dtu.ac.in](mailto:internation_admission@dtu.ac.in)

Fax: +91-11-27871023 | <http://www.dtu.ac.in/>, <https://intaffairs.dtu.ac.in/>